



Ashburn Gardens, SW7

£588 Per week

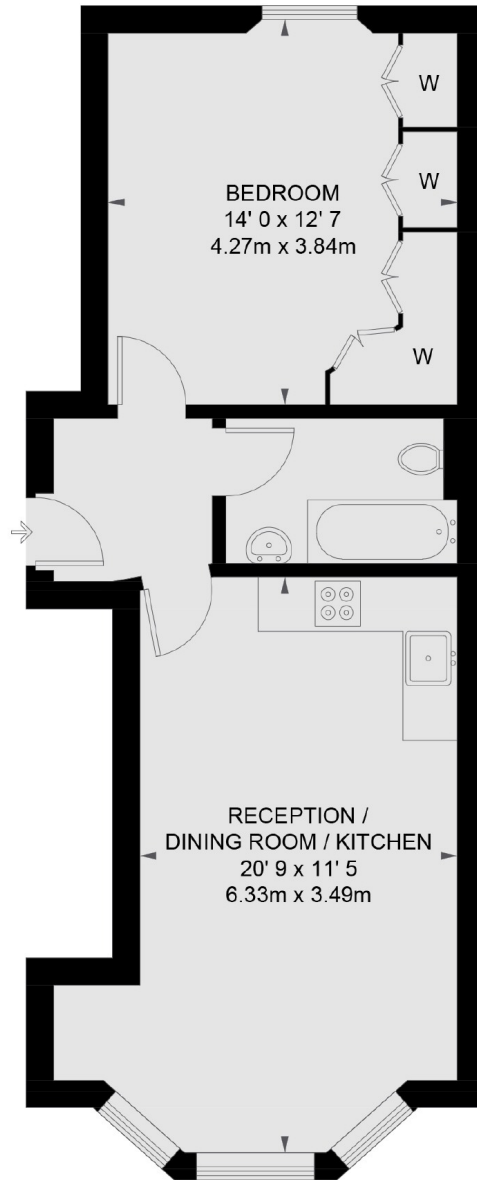
A spacious one bedroom flat to let furnished, located just off Gloucester Road. The flat is arranged over the raised ground floor of a Victorian house, with high ceilings and contemporary furnishings.

Located just off Gloucester Road with a wide choice of restaurants and shops including Waitrose supermarket and Boots chemist. Hyde Park and Kensington High Street are within easy reach.

Features

- Double Bedroom
- Spacious Living Room
- Built-In Storage
- Open Plan Kitchen
- Modern Fixtures & Fittings
- Gloucester Road Underground

Ashburn Gardens, London, SW7



RAISED GROUND FLOOR

TOTAL APPROX. FLOOR AREA 521 SQ. FT. (48.4 SQ. M.)