



Harrington Gardens, SW7

£623 Per week

Dexters



Harrington Gardens, SW7

A bright and spacious one bedroom flat in an impressive Victorian conversion. The flat is located between Collingham Gardens and Gloucester Road.

Close to Gloucester Road with a Waitrose supermarket, Pauls the bakers and Boots the chemist. Sainsburys supermarket is located next door to Point West, just off Cromwell Road.

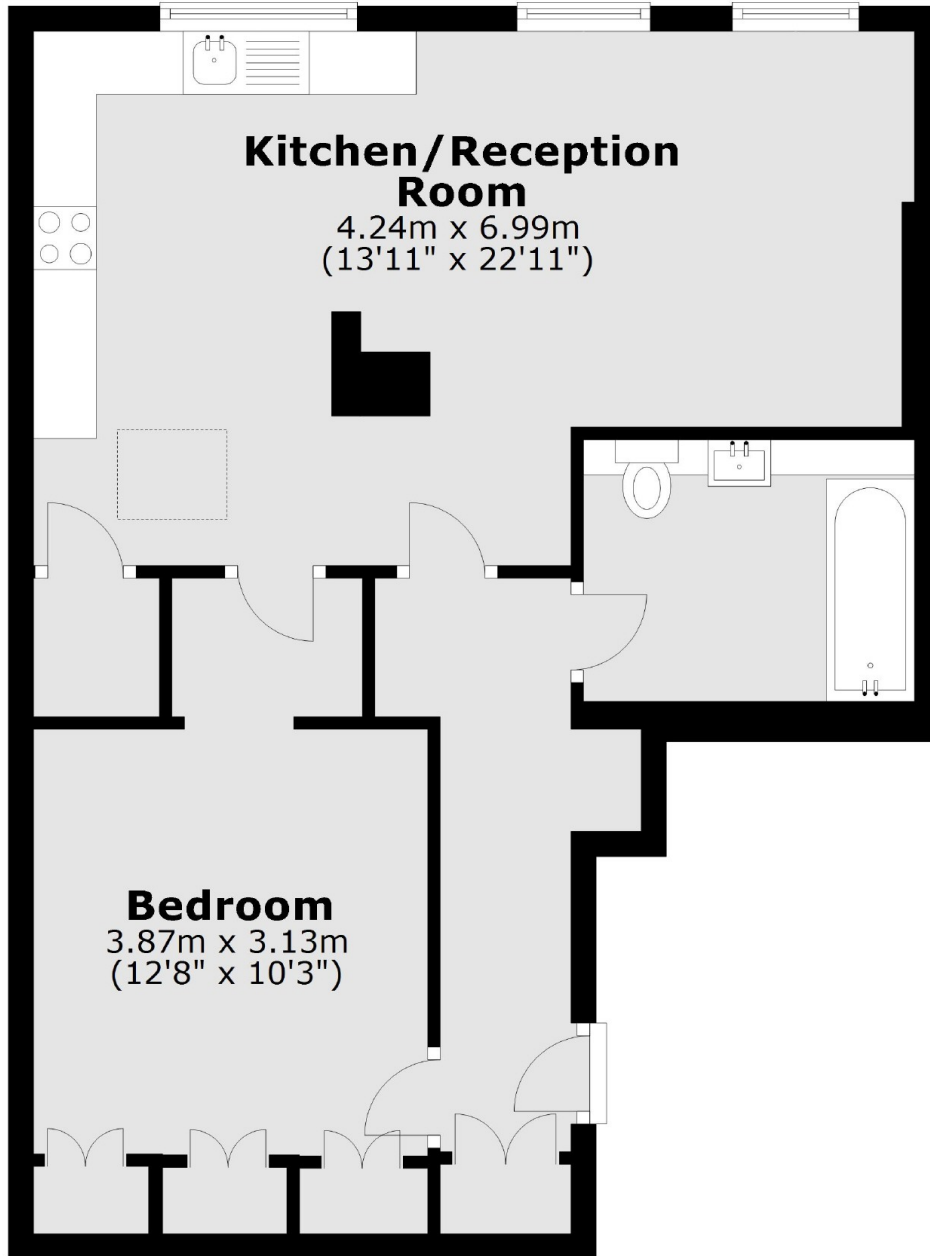
Features

- Spacious Double Bedroom
- Wooden Flooring
- Open Plan Kitchen
- High Ceilings
- Built In Storage
- Utility Room



Harrington Gardens,
London, SW7

Lower Ground Floor



Total area: approx. 56.1 sq. metres (603.5 sq. feet)