



Wetherby Gardens, SW5

£895 Per week

Recently refurbished two bedroom flat arranged over the second floor of a Victorian conversion. Located on a beautiful communal garden square just off Gloucester Road.

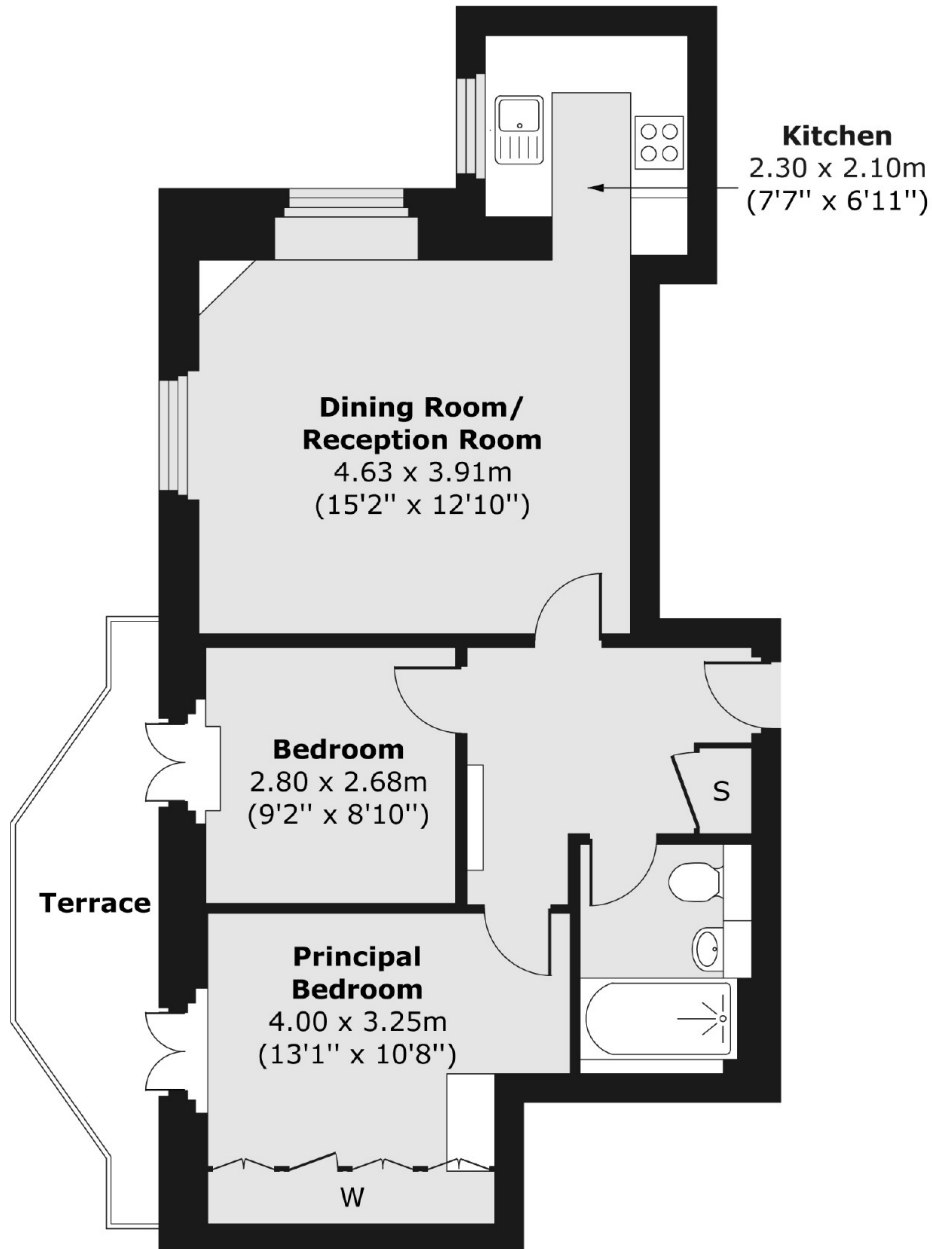
Wetherby Gardens is ideally located for the shops and restaurants on Gloucester Road and Old Brompton Road, including a Waitrose supermarket, and Black & Blue Steak House.

Features

- Two Bedroom
- Fully Furnished
- Bright And Spacious
- Ample Storage
- Private Balcony
- Period Features

Wetherby Gardens, London, SW5

Second Floor



Total area (approx.) 53.99 sq. m (581 sq. ft)

Terrace area (approx.) 6.63 sq. m (71 sq. ft)