



Redcliffe Gardens, SW10

£1,625,000

This newly refurbished two bedroom first floor apartment has been finished to extremely high standard. The property benefits from high ceilings, doors and large windows to compliment the natural light you have throughout. Accommodation comprises a large reception room, separate kitchen, two double bedrooms and two bathrooms.

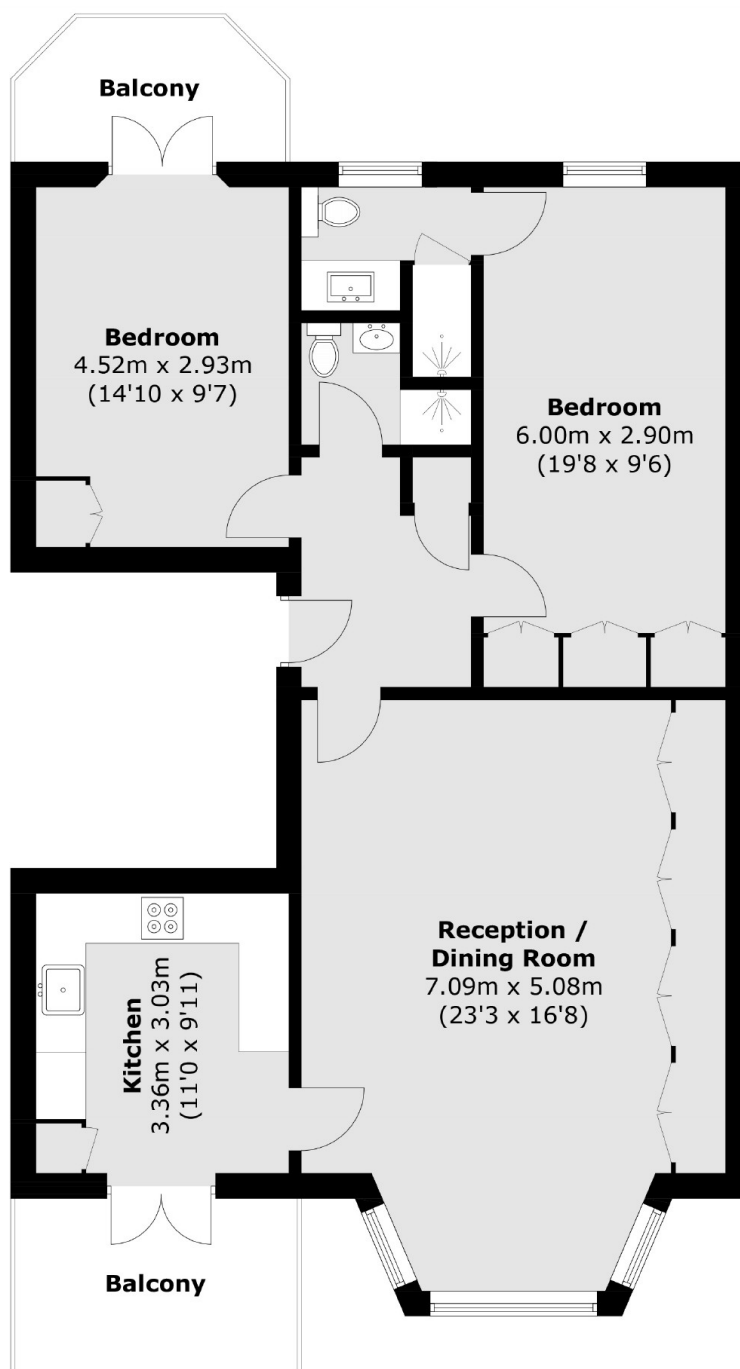
The current seller has made multiple upgrades to the property including additional storage space throughout, surround speaker system as well as a water softener feature.

Redcliffe Gardens is a popular road ideally located between the Redcliffe Square gardens and Earls court road. It is close to the shops and restaurants on Earls court road. The closest underground station is Earls Court Road.

Features

- First Floor Apartment
- Share of Freehold
- Newly Refurbished
- Two Bedroom
- Wood floors
- High Ceilings

Redcliffe Gardens, London, SW10



Total area (approx.): 89.0 sq. m (958.0 sq. ft)
Balcony area (approx.): 12.1 sq. m (130.2 sq. ft)