



Pont Street, SW1X

£2,995 Per week

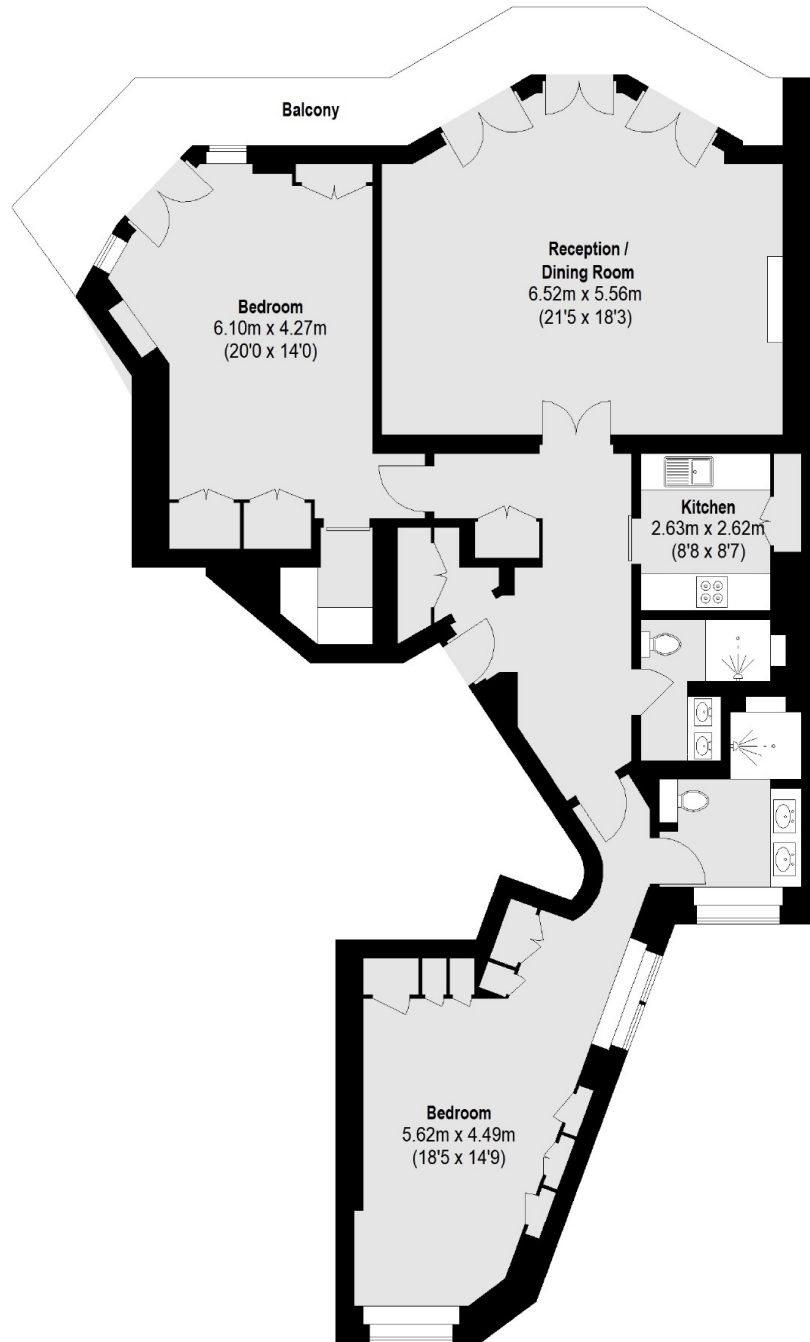
A fantastic first floor flat to rent with two double bedrooms on one of Knightsbridge's most sought after streets, finished to an immaculate standard with a private balcony.

Pont Street is located in the heart of Knightsbridge just off Sloane Street close to the shops and restaurants of Brompton Road and Sloane Square.

Features

- Two Bedrooms
- Private Balcony
- First Floor Flat
- Parquet Wooden Flooring
- Double High Ceilings
- Excellent Location

Pont Street,
London, SW1X



Total area (approx.): 125.86 sq. m (1355 sq. ft)
Balcony: 16.15 sq. m (174 sq. ft)