

## Clareville Street, SW7

£4,250 Per week

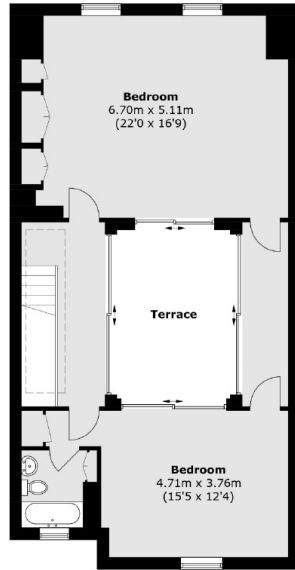
This large modern terraced house is located in the heart of South Kensington. There is a wealth of excellent reception space on both the raised and lower ground floors and a double height ceiling over the dining area which provides excellent natural light. This stunning house benefits from private patio gardens and a fantastic roof terrace.

Clareville Street runs off the Old Brompton Road, it is 3 blocks from Gloucester Road tube and 6 blocks from South Kensington tube and is well served by the shops and restaurants in the area.

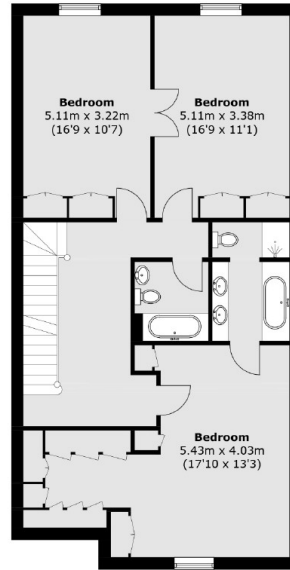
### Features

- Five Bedrooms (En-Suite)
- Two Reception Rooms
- Two Family Bathrooms
- Patio Garden
- Roof Terrace
- Wooden Flooring

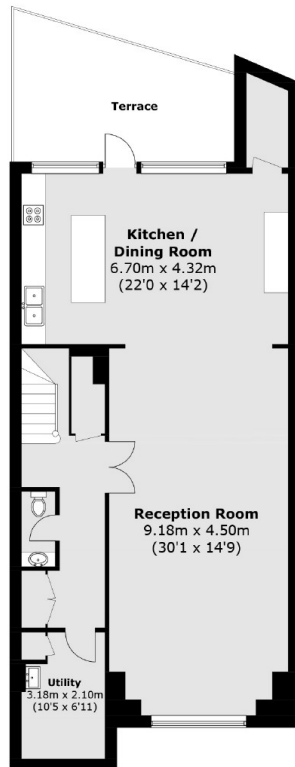
Clareville Street,  
London, SW7



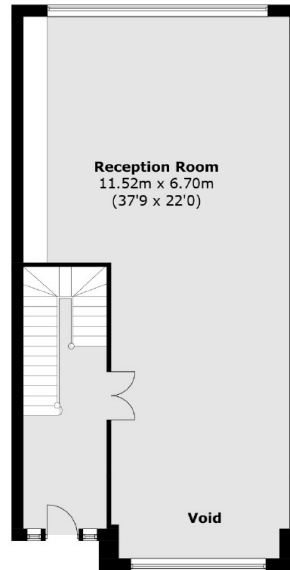
Third Floor



Second Floor



Ground Floor



First Floor

Total area (approx.): 349.6 sq. m (3,763.9 sq. ft)  
Total area (approx.): 29 sq. m (312.1 sq. ft)