



Lexham Gardens, W8

£1,400,000

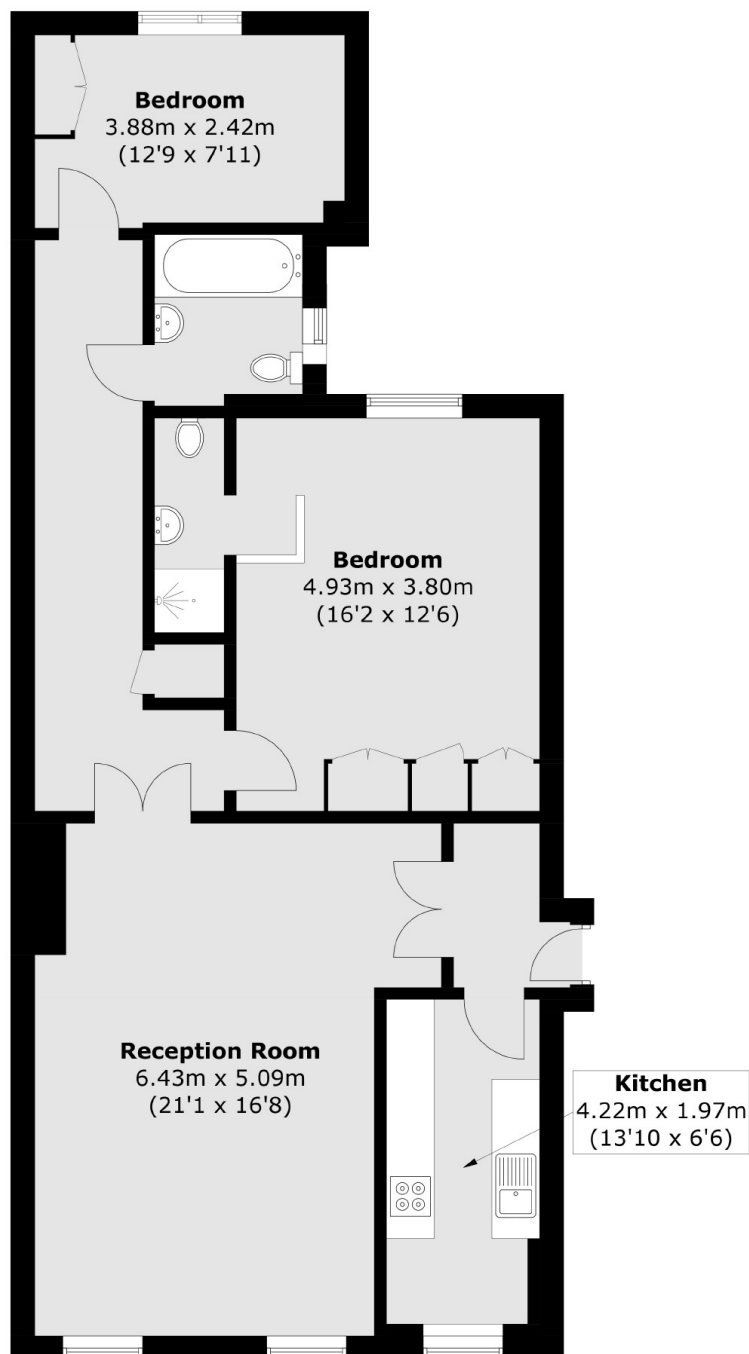
A bright and neutrally decorated two bedroom flat in a stucco fronted Victorian conversion. The reception room benefits from an abundance of natural light which is complemented by the high ceilings the property offers. Furthermore, both of the bedrooms are double rooms with built-in wardrobes.

Located between Gloucester Road and Kensington High Street with a wide choice of shops and restaurants including Waitrose, Starbucks and Marks and Spencer's.

Features

- Victorian Conversion
- Separate Kitchen
- Share Of Freehold
- Two Double Bedrooms
- High Ceilings
- Two Bathrooms

Lexham Gardens, London, W8



Total area (approx.): 90.5 sq. m (974.1 sq. ft)