



Rosary Gardens, SW7

£695 Per week

A bright, two bedroom flat to rent in South Kensington. The flat is arranged over the third floor of a Victorian building on a quiet residential street just off Old Brompton Road and close to Gloucester Road underground.

Close to Gloucester Road with a wide choice of cafés, shops and restaurants including the Waitrose supermarket, Boots chemist, prêt coffee shop and Black & Blue steak house. Gloucester Road is the closest underground.

Features

- Two Double Bedrooms
- Large Reception Room
- Separate Kitchen
- Modern Tiled Bathroom
- Third Floor
- Gloucester Road Underground

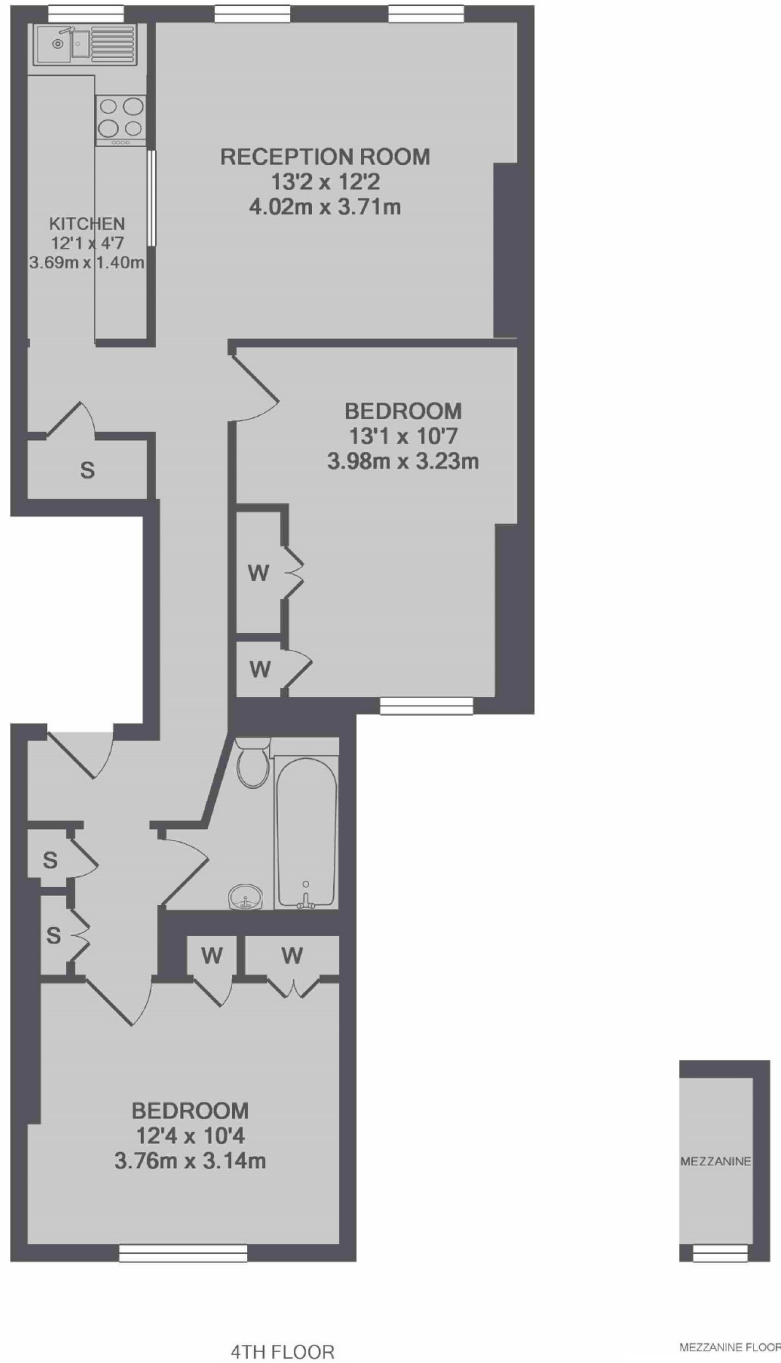


Rosary Gardens, SW7

The Reception room is spacious and has ample room for dining. The master bedroom is at the back of the flat and has built in storage. The bathroom is recently refurbished with a power shower over bath. The second bedroom is on the top floor with built in wardrobes also. The kitchen is separate equipped with all modern appliances.



Rosary Gardens, London, SW7



TOTAL APPROX. FLOOR AREA 723 SQ.FT. (67.2 SQ.M.)