



Courtfield Gardens, SW5

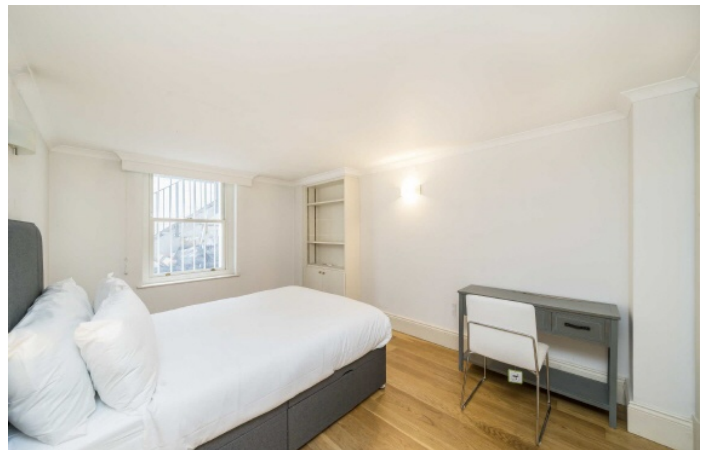
£1,195 Per week

A three bedroom flat arranged over two floors of a Victorian period conversion situated on a communal garden square. Separate eat in kitchen and dining room ideal for entertaining.

Ideal for a wide choice of shops and restaurants on Gloucester Road including Waitrose, Starbucks and Zacks café. Its also a short distance to Earls Court with an array of international restaurants.

Features

- Three Bedrooms
- Three Bathrooms
- High Ceilings
- Dining Room
- Period Conversion
- Communal Gardens



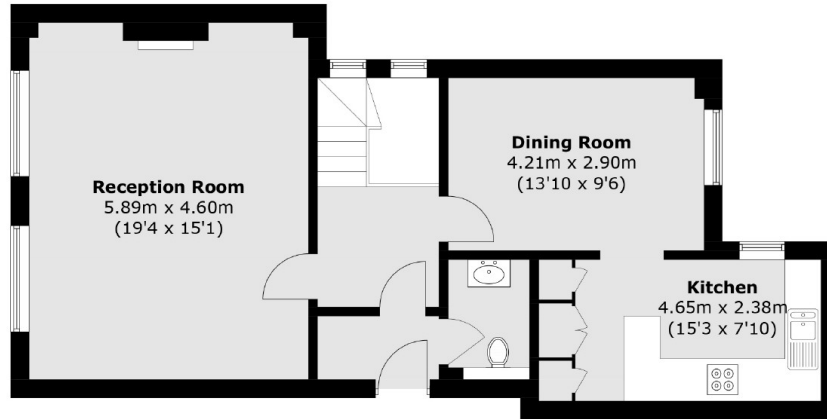
Courtfield Gardens, SW5

This three-bedroom flat is arranged over the ground and lower ground floor of a stucco front period conversion on an award winning communal gardens square.

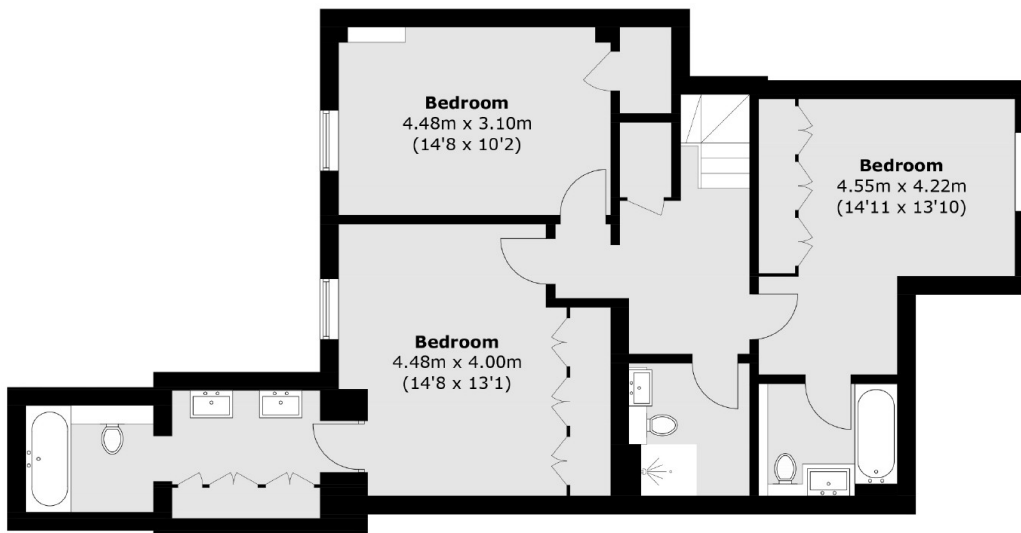
The property is very well finished with wood floors and neutral décor throughout. The reception room looks over the gardens with high ceilings and original period features including two large sash windows. The separate dining room and large eat in kitchen provides plenty of space for dinner parties. Fitted storage in each of the three bedrooms and three bathrooms makes this ideal for a family or professional sharers



Courtfield Gardens, London, SW5



Ground Floor



Lower Ground Floor

Total area (approx.): 147.5 sq. m (1587.6 sq. ft)