



Cromwell Road, SW7

£675,000

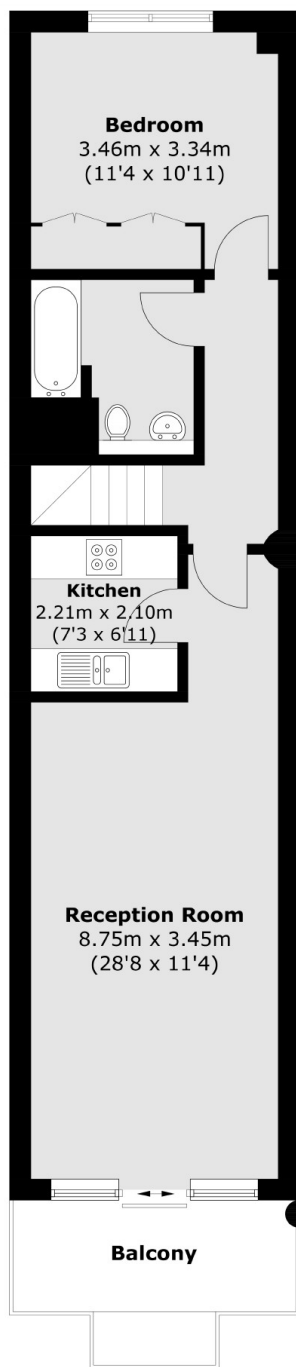
A spacious two double bedroom, two bathroom apartment situated on the eighth and ninth floors (with lifts and 24 hour porters). This Point West apartment comprises of a separate kitchen and spacious living room. The property further benefits from London views off the balcony space.

The apartment is conveniently positioned across the road from Gloucester Road underground station, close to Sainsbury's and Waitrose supermarkets and within easy reach of Kensington High Street and Hyde Park.

Features

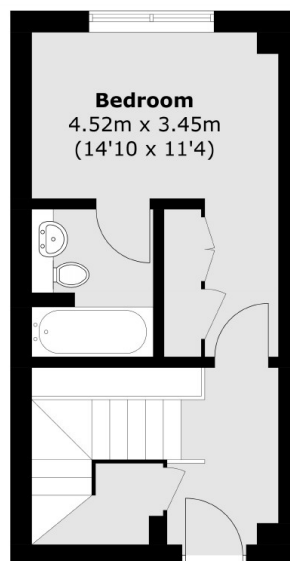
- Two Double Bedrooms
- Two Bathrooms
- Built-In Storage
- Juliet Balcony
- 24 Hour Concierge
- No Chain

Cromwell Road, London, SW7



Eighth Floor

Total area (approx.): 80.6 sq. m (867.5 sq. ft)
Balcony area (approx.): 7.5 sq. m (80.7 sq. ft)



Ninth Floor