



## Ennismore Gardens, SW7

£5,550,000

Having undergone a high standard refurbishment, this stunning apartment is accessed through a direct lift up on the fifth floor. There is plenty of natural light through the property, which further benefits from high ceilings throughout, adding to its charm.

Ennismore Gardens is a tranquil, private, residents-only square located in Knightsbridge with easy access to South Kensington and Hyde Park. Imperial College is located on Exhibition Road and Harrods on Brompton Road, both an easy walk from the property. Nearest underground stations are situated at Knightsbridge and South Kensington.

### Features

- Three Double Bedrooms
- Access To Communal Gardens
- High Ceilings
- Three Bathrooms
- Direct Lift Access
- Porter
- Exceptional Finish
- Share Of Freehold



## Ennismore Gardens, SW7

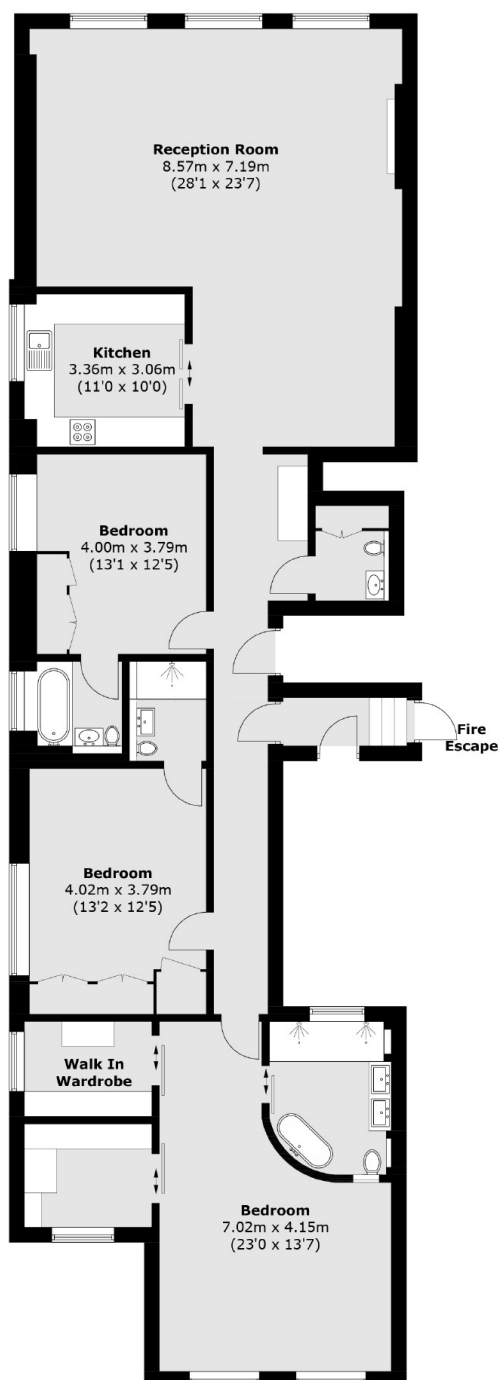
The three bedrooms each have en-suite marble bathrooms, with an additional guest WC. The principle bedroom also features his and hers walk-in wardrobe.

The kitchen has Gaggenau integrated appliances which is semi open plan onto the reception room, which boasts high ceilings and parquet flooring throughout.





# Ennismore Gardens, London, SW7



Total area (approx.): 169.2 sq. m (1,821.2 sq. ft)

## Dexters

South Kensington  
144 Old Brompton Road  
London  
SW7 4NR  
Sales  
0207 838 0108

Energy Rating: C. We aim to make our particulars both accurate and reliable. However they are not guaranteed; nor do they form part of an offer or contract. If you require clarification on any points then please contact us, especially if you're traveling some distance to view. Please note that appliances and heating systems have not been tested and therefore no warranties can be given as to their good working order.

 **RICS** | Regulated  
Estate Agent  
and Letting Agent

[dexters.co.uk](https://www.dexters.co.uk)