



## Southwell Gardens, SW7

£675,000

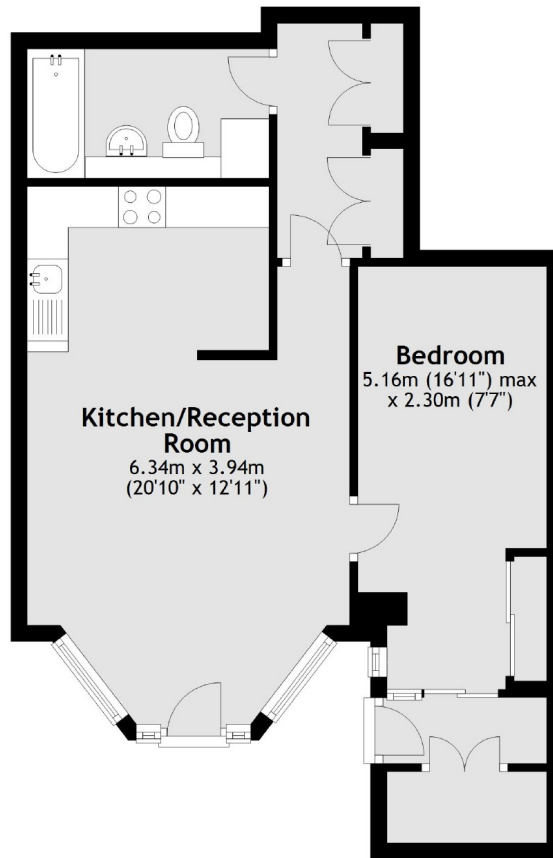
A lovely one double bedroom flat located in a well maintained Victorian conversion building. There is a double bedroom with fitted storage, bathroom and open plan kitchen/reception. The property further benefits from its own private entrance and patio area,

Southwell Gardens is conveniently located with many shops, bars and restaurants found nearby. The closest underground station is Gloucester Road.

### Features

- One Double Bedroom
- Share Of Freehold
- One Bathroom
- Patio
- Open Plan Living
- Recently Decorated

# Southwell Gardens, London, SW7



Total area: approx. 48.4 sq. metres (521.4 sq. feet)