



## Child's Street, SW5

£1,400,000

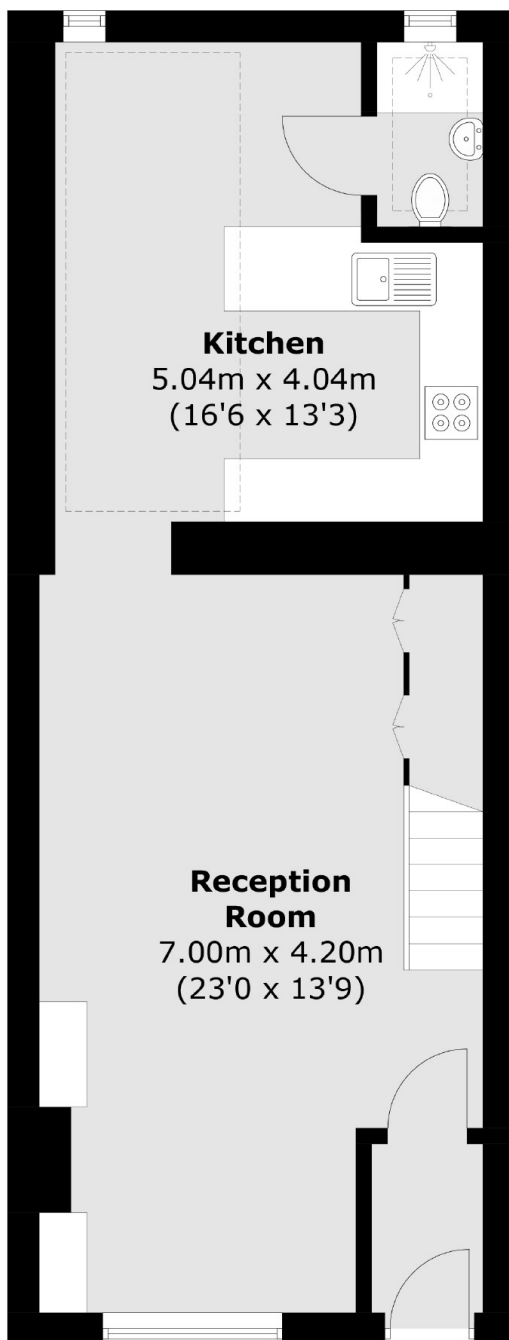
An end of terrace mews house on a quiet cul-de-sac just off Earls Court Road. There is open living space on the ground floor with w/c and two double bedrooms and family bathroom on the first floor. The property also benefits from a private garden.

Childs Street is a quiet mews off Earls Court Road in central Earls Court for the shops, bars, restaurants and cafes as well as the tube station.

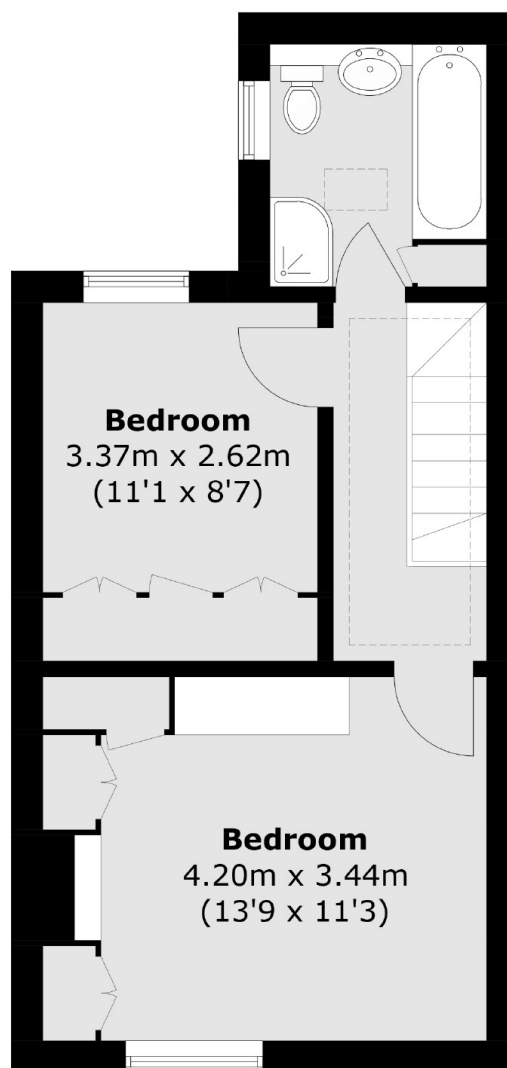
### Features

- Mews House
- Private Patio Garden
- Two Double Bedrooms
- Semi Open Plan
- End Of Terrace
- Earls Court Station

# Child's Street, London, SW5



**Ground Floor**



**First Floor**

Total area (approx.): 84.4 sq. m (908.5 sq. ft)