



Cromwell Road, SW7

£898 Per week

An immaculate newly refurbished two double bedroom, lateral apartment with a large living space, separate kitchen and direct lift access, located within this hugely popular development benefiting from 24 hour concierge in the South Kensington area.

The apartment is conveniently positioned across the road from Gloucester Road underground station, close to Sainsbury's and Waitrose supermarkets and within easy reach of Kensington High Street, Imperial College, Knightsbridge and Hyde Park.

Features

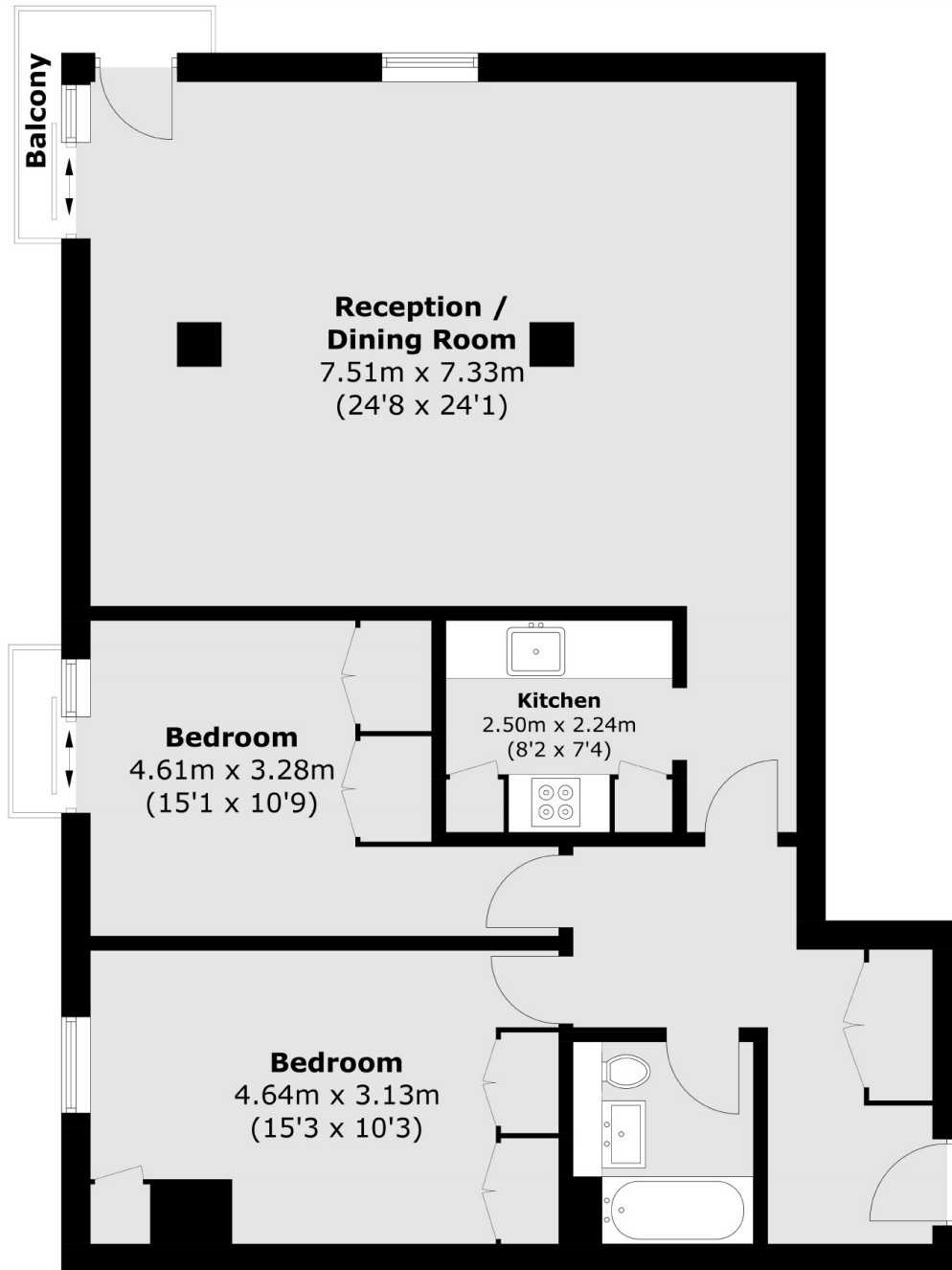
- Two Bedrooms
- Ample Storage
- Large Living Room
- Lift
- 24 Concierge
- Wooden Floors
- Excellent Finish
- Modern Appliances
- Council Tax Included



Cromwell Road, SW7



Cromwell Road,
London, SW7



Total area (approx.): 93.4 sq. m (1005.3 sq. ft)
Balcony : 1.7 sq. m (18.3 sq. ft)