



## Courtfield Gardens, SW5

£1,750,000

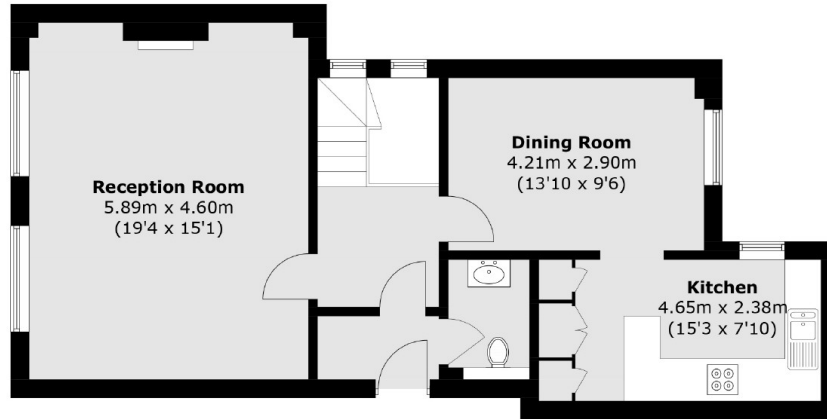
This three bedroom apartment for sale is arranged over the raised ground and lower ground floors of a beautiful, well maintained, stucco building. The property is very well finished with wooden floors, modern units, neutral décor throughout and access to the communal garden square.

Ideal for a wide choice of shops and restaurants on Gloucester Road including Waitrose, Starbucks and Zacks Café. It's also a short distance to Earls Court with an array of international restaurants.

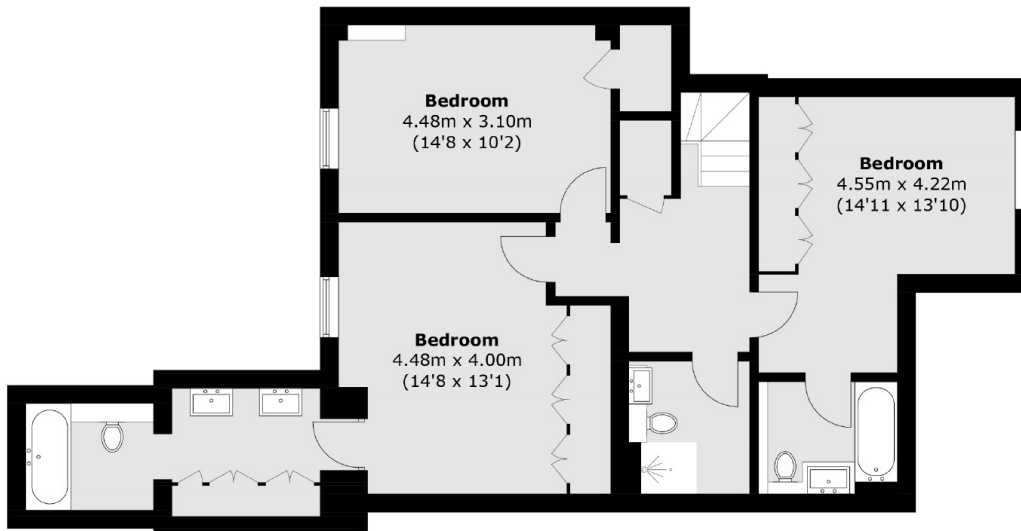
### Features

- Spacious Apartment
- Access to Communal Gardens
- Walking Distance To Amenities and Tube Station
- High Ceilings
- Three Bathrooms

# Courtfield Gardens, London, SW5



**Ground Floor**



**Lower Ground Floor**

Total area (approx.): 147.5 sq. m (1587.6 sq. ft)