



## Rosary Gardens, SW7

£750 Per week

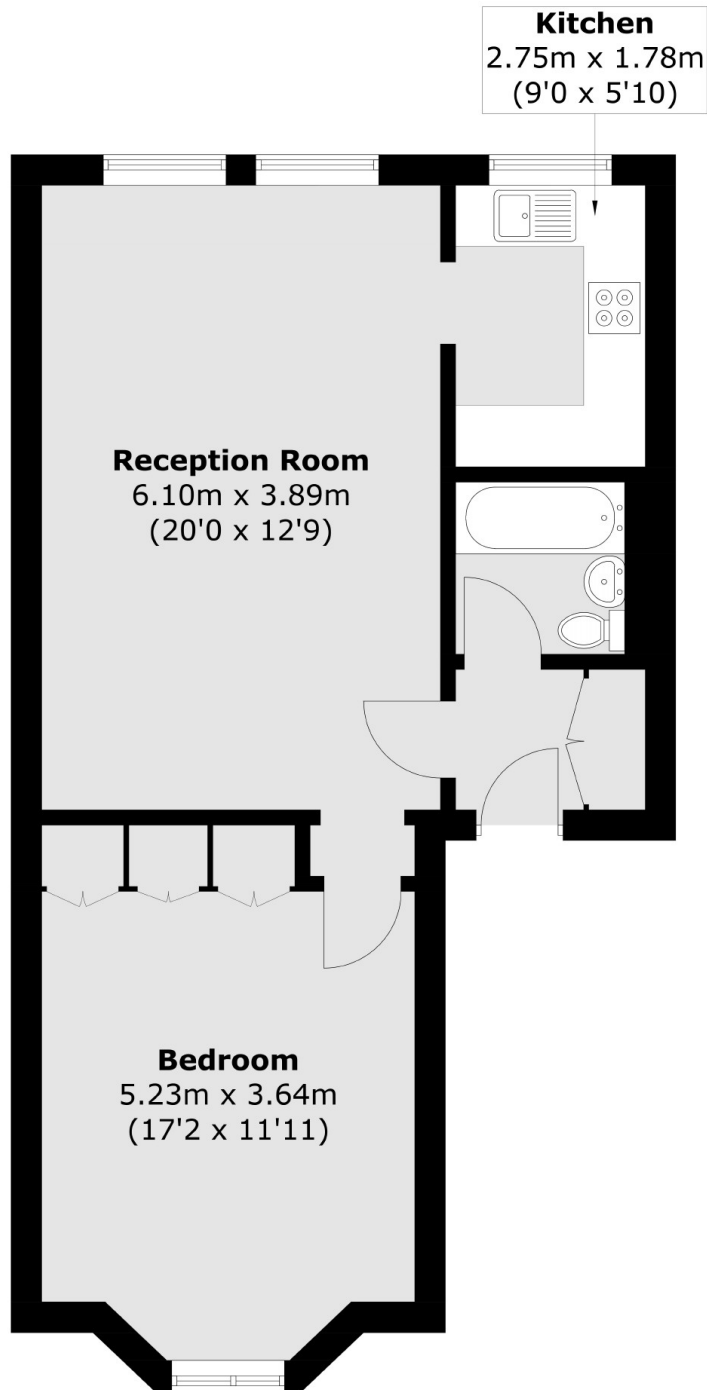
A fantastic one bedroom apartment perfect for a single professional or couple looking to be in the heart of the action. The apartment has a lovely large living room a separate kitchen.

Rosary Gardens is located close to the shops and restaurants on Gloucester Road, including Waitrose, Sainsburys and Prêt coffee shop. The nearest underground station is Gloucester Road.

### Features

- Double Bedroom
- Ample Storage
- Wooden Floors
- Excellent Location
- Large Living Room
- West Facing

Rosary Gardens,  
London, SW7



Total area (approx.): 54.6 sq. m (587.7 sq. ft)