



Queen's Gate, SW7

£1,350 Per week

**Dexters**



## Queen's Gate, SW7

Enviably located in a prime position at the northern-most end of Queen's Gate, and situated within a handsome building, this contemporary three bedroom property is located within the heart of South Kensington.

Complete with its own private entrance on the lower ground floor level the property includes a double reception room with ample dining space, three double bedrooms, two modern bathrooms, fully integrated high spec kitchen, cloakroom/utility room and dry-lined vault.

This striking property is in excellent condition throughout, offering spacious and stylish accommodation, including a pretty courtyard patio.

Queen's Gate is in the heart of South Kensington within close walking distance of Kensington Gardens, Hyde Park, Knightsbridge and the Royal Albert Hall.

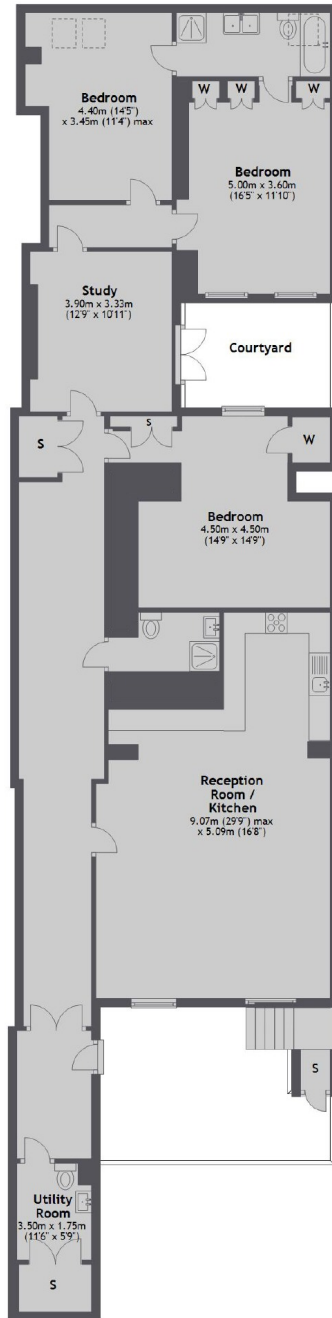
### Features

- Three Double Bedrooms
- Private Patio
- Two Modern Bathrooms
- Wooden Flooring
- Utility Room
- Built-In Storage



# Queen's Gate, London, SW7

## Lower Ground Floor



Total area: approx. 189.1 sq. metres (2035.9 sq. feet)