



Ennismore Gardens, SW7

£1,475 Per week

A beautifully refurbished three bedroom duplex located on one of the best garden squares in Knightsbridge. The flat is perfect for a family looking for entertaining space and room to relax.

Ennismore Gardens is ideally located in the heart of Knightsbridge ideally located close to the shops and restaurants including Marks and Spencer simply foods and Zuma restaurant. The closest underground station is Knightsbridge.

Features

- Three Double Bedrooms
- One Cloakroom
- Lift Access
- Modern
- Separate Kitchen
- Access To Communal Garden



Ennismore Gardens, SW7

The flat is entered into on the fourth floor into a hallway that all three bedrooms are located off. The master bedroom has built in storage and an en suite with shower over bath.

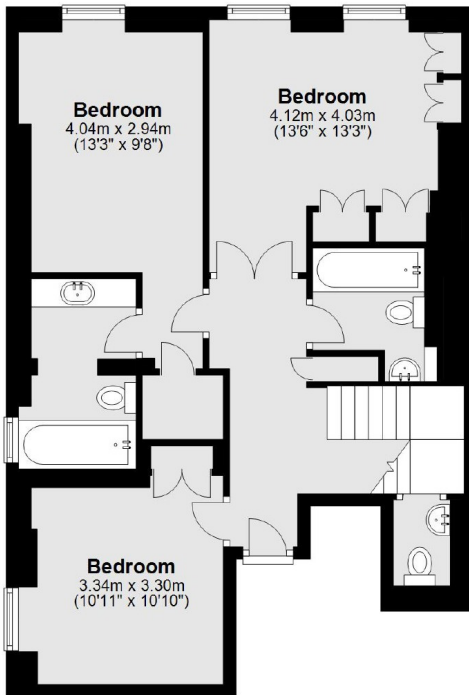
Two further bedrooms are on the fourth floor with built in storage. There is also a guest bathroom with with shower over bath and a guest WC on this floor.

On the fifth floor is a large reception room with space for dining and a terrace. The kitchen is separate and has integrated appliances, a range cooker and a pantry.



Ennismore Gardens, London, SW7

Fourth Floor



Fifth Floor

