



Cornwall Gardens, SW7

£1,050 Per week

A three bedroom property just off Gloucester Road offers a high quality finish and hard wood flooring. A large reception, modern kitchen, three double bedrooms, master with en suite, a further bathroom and utility room. The property also benefits from access to the private gardens.

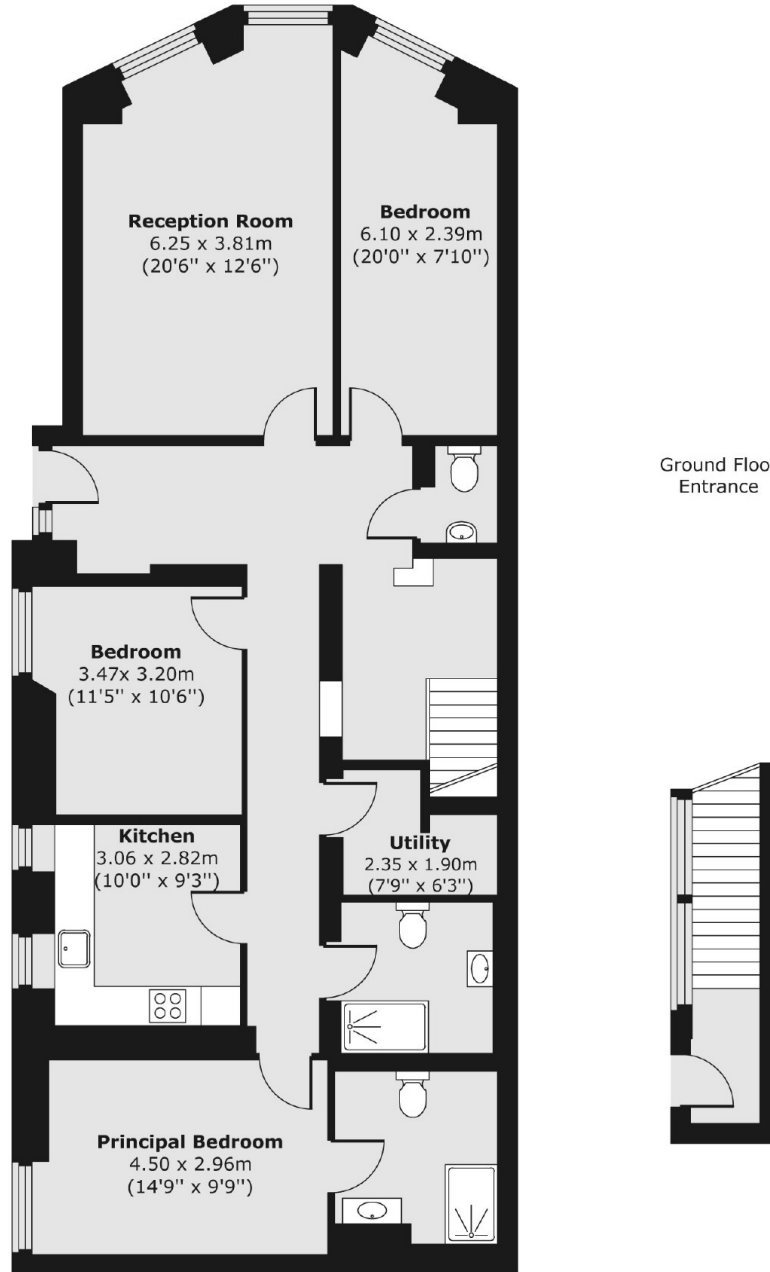
Cornwall Gardens is a highly desirable garden square road off Gloucester Road, for access to the boutique shops, bars and cafes on offer. Gloucester Road tube station is the closest station.

Features

Newly Refurbished
Three Double Bedrooms
High Spec Kitchen
Two Bathrooms
Wooden Flooring
Communal Gardens

Cornwall Gardens, London, SW7

Lower Ground Floor



Total area (approx.): 125.40 sq. m (1,350 sq. ft)