



Dove Mews, SW5

£1,650,000

A fantastic family house based on one of the best mews in South Kensington. Consisting of a separate reception room and kitchen on the ground floor with two bathroom on the first floor and three double bedrooms. The second floor leads straight into a study area with doors opening onto a large private roof terrace.

Dove Mews is a stunning private residential lane located off Old Brompton Road, which comes with shops, boutiques, restaurants and bars on offer. In terms of transport you are within close proximity to Gloucester Road and South Kensington Tube Stations.

Features

- Three Bedrooms
- Two Bathrooms
- Separate Kitchen
- Wooden Flooring
- Freehold
- Private Roof Terrace



Dove Mews, SW5

The house enters on the ground floor with a beautiful large reception room which is a perfect size for entertaining guests or alternatively a lovely family night in. The kitchen is separate from the living room and has all of the built in appliances one would need to run such a lovely house.

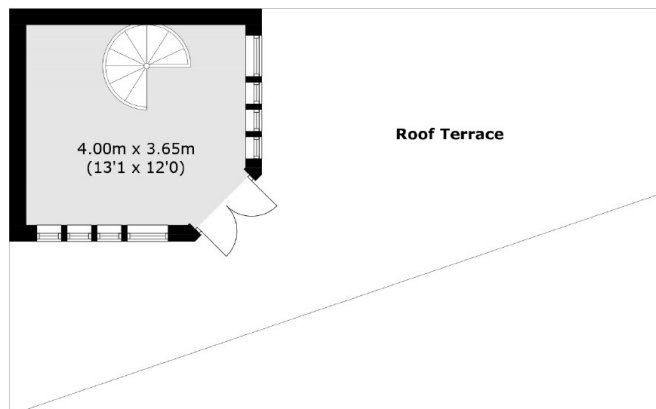
The first floor consists of a good size master bedroom with an en-suite bathroom. The bedroom has plenty of storage space for your clothes and shoes.

The guest bedroom is at the other end of the floor with access to a family size bathroom and again has superb storage. The third bedroom is a really good size double.

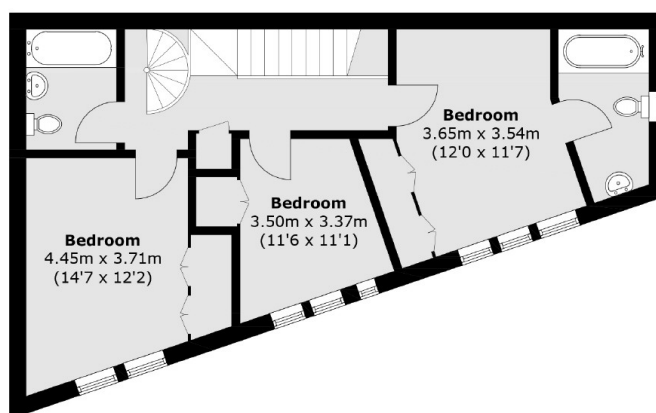
On the top floor you have a wonderful open plan room which is currently being used as an office. It has doors opening out into a decked roof terrace with perfect space for a summer BBQ and a good size gathering.



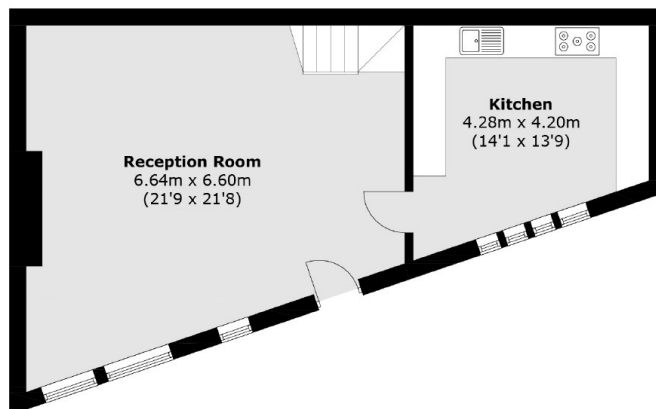
Dove Mews, London, SW5



Second Floor



First Floor



Ground Floor

Total area (approx.): 122.5 sq. m (1,319.5 sq. ft)
Roof Terrace Area: 45.5 sq. m (489.7 sq. ft)