



Cornwall Gardens, SW7

£875 Per week

A smart three bedroom flat to let furnished and arranged over the lower ground floor of a stucco fronted house with a private patio and located on a garden square.

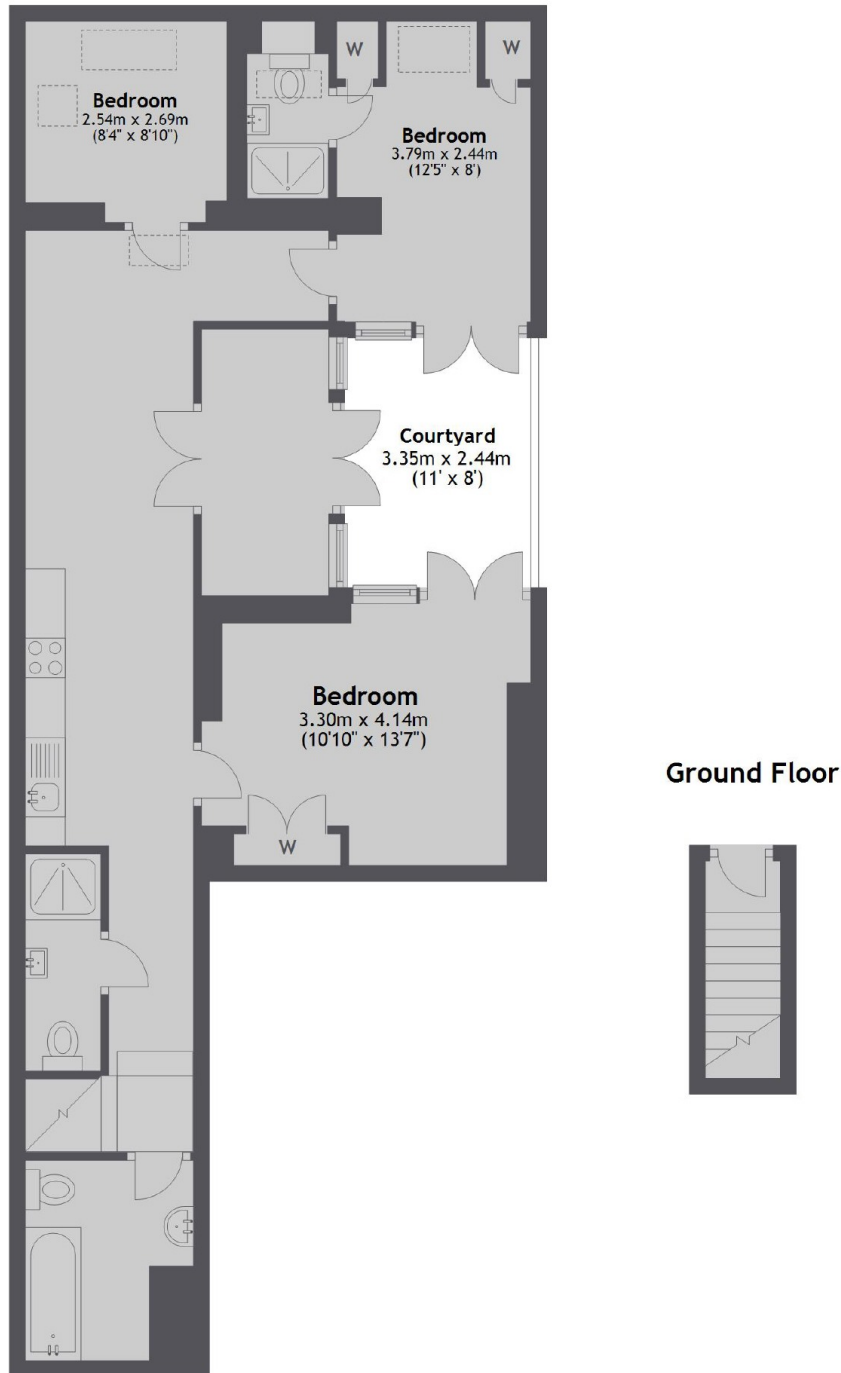
Close to Gloucester Road with a Waitrose supermarket, Pauls the bakers and Boots the chemist. Sainsburys supermarket is located next door to Point West just off Cromwell Road.

Features

- Three Double Bedrooms
- Three Bathrooms
- Open Plan Reception
- Private Patio
- Wooden Flooring
- Gloucester Road

Cornwall Gardens, London, SW7

Lower Ground Floor



Total area: approx. 74.5 sq. metres (801.9 sq. feet)