



Queen's Gate Mews, SW7

£3,795 Per week

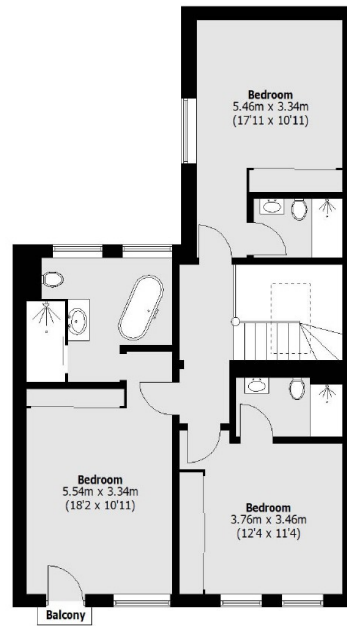
An exceptional four/five bedroom mews house with a private garage and courtyard garden on a popular Queens Gate Mews. The house is refurbished to a very high standard and arranged over three floors.

A fantastic location for the wide selection of local amenities on Gloucester Road, as well as the open spaces of Hyde Park. The nearest underground station is Gloucester Road.

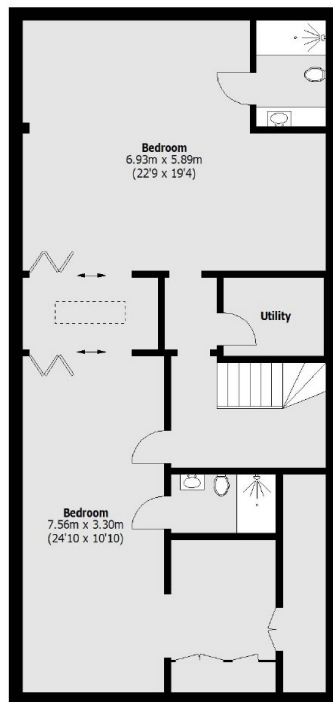
Features

- Four/Five Bedrooms
- Five Bathrooms
- Private Garage
- Private Courtyard Garden
- Gaggenau Appliances
- Excellent Location

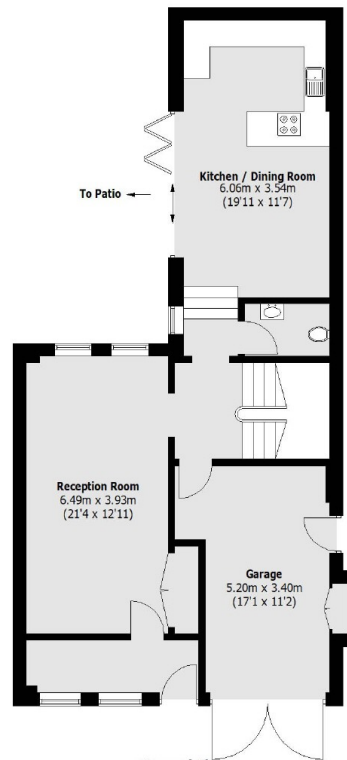
Queen's Gate Mews, London, SW7



First Floor



Lower Ground Floor



Ground Floor

Total area (approx.): 262.1 sq. m (2,821.2 sq. ft)
(Including Garage)