



## Queen's Gate Terrace, SW7

£1,300 Per week

A stunning duplex apartment on the ground and lower ground floors of this period building in the heart of South Kensington. The property comprises one bedroom with en-suite shower room and reception room with fully fitted open plan kitchen.

Queen's Gate Terrace is a quiet Victorian terrace, conveniently located between Queen's Gate and Gloucester Road so well located for Imperial College, Hyde Park, South Kensington and Knightsbridge.

### Features

- Newly Renovated
- Spacious Double Bedroom
- Wooden Flooring
- Duplex Apartment
- High Ceilings
- Built-In Storage



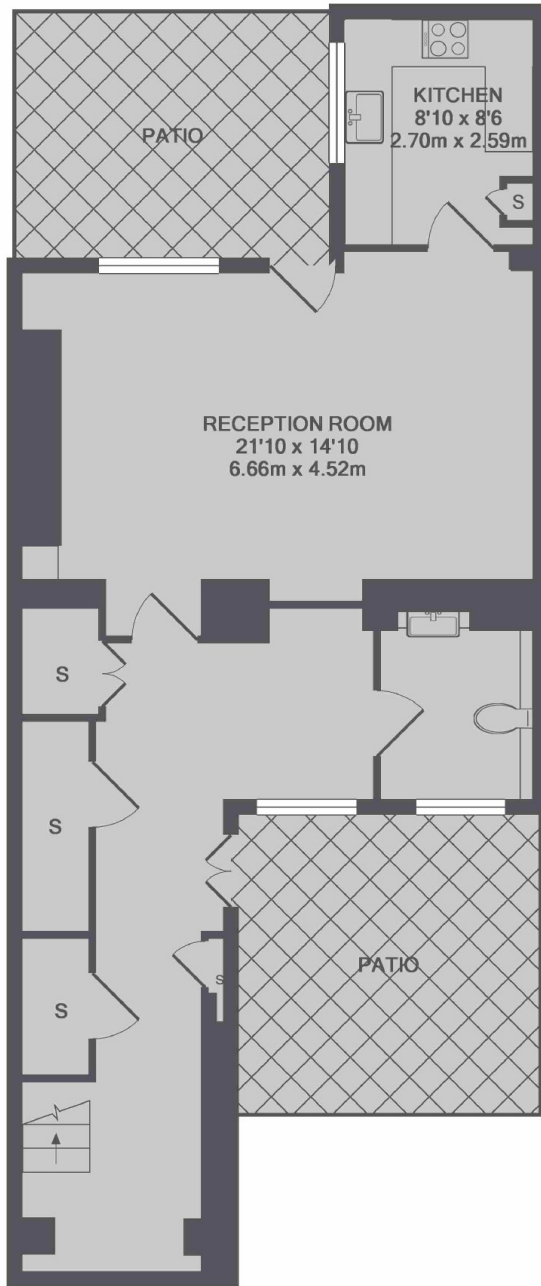
## Queen's Gate Terrace, SW7

The property is situated in a Grade II listed newly restored historic building and comprises large double bedroom with built in wardrobes, en suite shower room and large reception room with French windows. The apartment further benefits from a caretaker and an on-site gym.





# Queen's Gate Terrace, London, SW7



LOWER GROUND FLOOR



GROUND FLOOR

TOTAL APPROX. FLOOR AREA 1233 SQ.FT. (114.6 SQ.M.)