

## Queen's Gate Terrace, SW7

£900 Per week

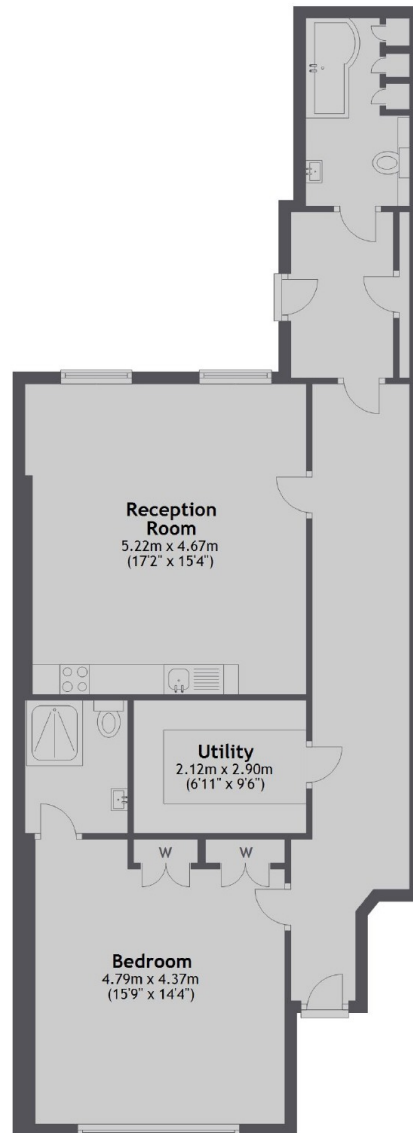
A one bedroom apartment on the lower ground floor of this period building in the heart of South Kensington. The property has an en suite shower room and reception room with a fully equipped open plan kitchen.

Queen's Gate Terrace is a quiet Victorian terrace, conveniently located between Queen's Gate and Gloucester Road so well located for Imperial College, Hyde Park, South Kensington and Knightsbridge.

### Features

- Newly Renovated
- Spacious Double Bedroom
- Wooden Flooring
- Contemporary Finish
- High Ceilings
- Built In Storage

# Queen's Gate Terrace, London, SW7



Lower Ground Floor

Total area: approx. 85.3 sq. metres (918.4 sq. feet)