



## Lexham Gardens, W8

£1,350,000

A large two double bedroom, two bathroom apartment arranged over two floors, with panoramic views from the private balcony and based on the sought-after Lexham Gardens, Kensington.

Located between Gloucester Road and Kensington High Street with a wide choice of shops and restaurants including Waitrose, Starbucks and Marks & Spencer's

### Features

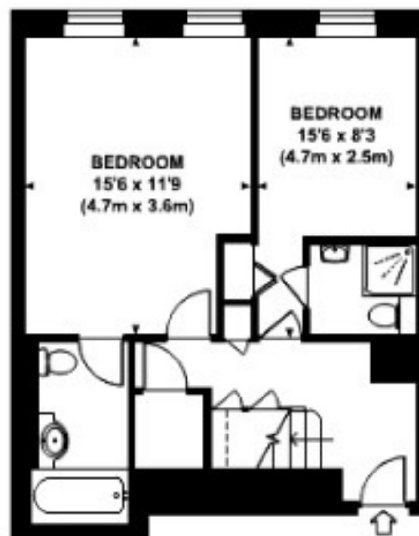
- Two Double Bedrooms
- Two Bathrooms
- Split Level
- Private Balcony
- Top Floor With Lift
- Neutral Decor

# Lexham Gardens, London, W8

Approx. gross internal area  
825 Sq Ft. / 72 Sq M.



FIFTH FLOOR



FOURTH FLOOR