



Ennismore Gardens, SW7

£2,500,000

Beautifully finished two double bedroomed apartment with fantastic living/dining space and a wonderful private patio.

Ennismore Gardens is one of the most sought after garden squares in Knightsbridge and is near to Harrods, Hyde Park and the world class restaurants and boutiques of the area. The closest means of transport is South Kensington underground station.

Features

- Two Double Bedrooms
- Two En Suite Bathrooms
- Private Patio
- Separate Modern Kitchen
- Private Entrance
- Excellent Storage



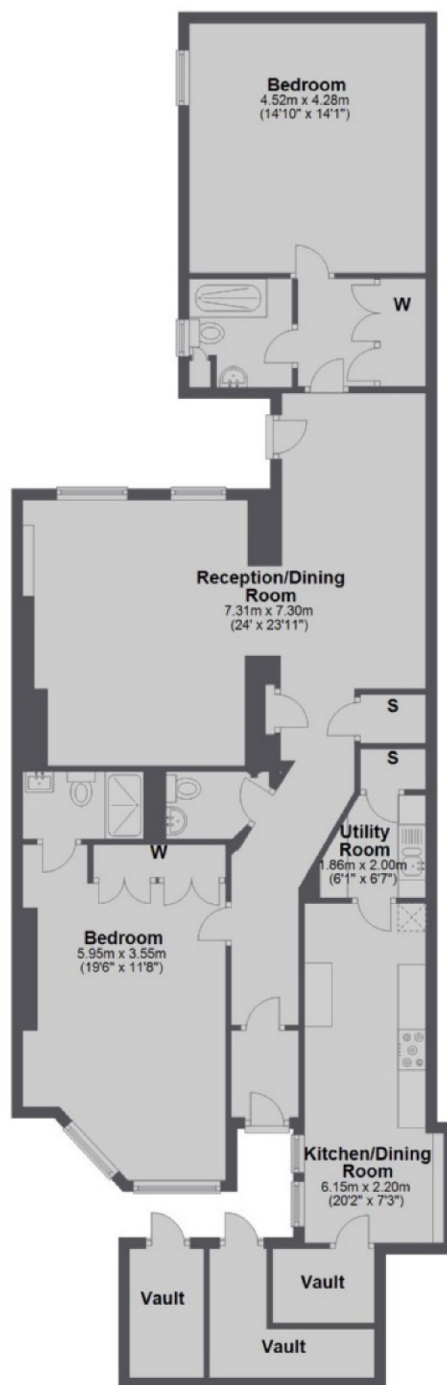
Ennismore Gardens, SW7

Accessed through a private front door, there is a modern kitchen with breakfast bar and separate utility room. There is a large reception room with excellent dining and entertaining space which leads onto a large private patio.

Both bedrooms have ample built in storage and modern en suite bathrooms with underfloor heating. There is also a guest WC and utility room.



Ennismore Gardens, London, SW7



Lower Ground Floor

Total area: approx. 133.5 sq. metres (1436.8 sq. feet)