



Onslow Crescent, SW7

£1,900,000

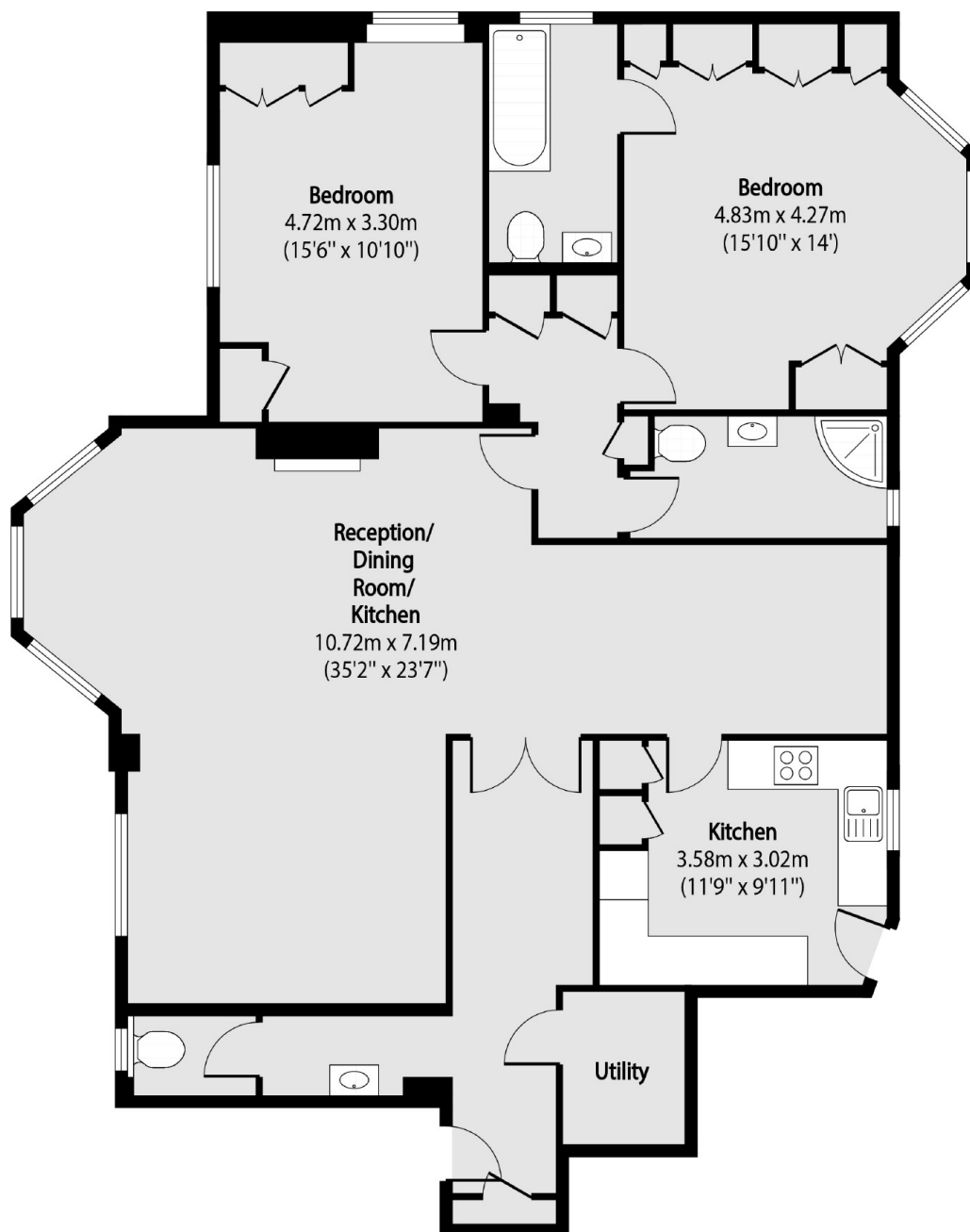
A large & bright first floor flat located in this portered building in South Kensington. The accommodation comprises two good sized double bedrooms with excellent storage, two bathrooms, a guest cloakroom & utility room. There is a spacious reception room with separate dining area leading to the fully fitted kitchen. Excellent transport links.

Melton Court is on Onslow Crescent, close to Onslow Square and opposite South Kensington underground station (District, Circle & Piccadilly lines).

Features

- Two Double Bedroom
- Long Lease 900+ years
- Two Bathroom
- Large Reception
- Separate Dining Area
- South Kensington Station

Onslow Crescent, London, SW7



Total area (approx): 124.58 sq m (1341 sq. ft)