

Old Brompton Road, SW7

£950,000

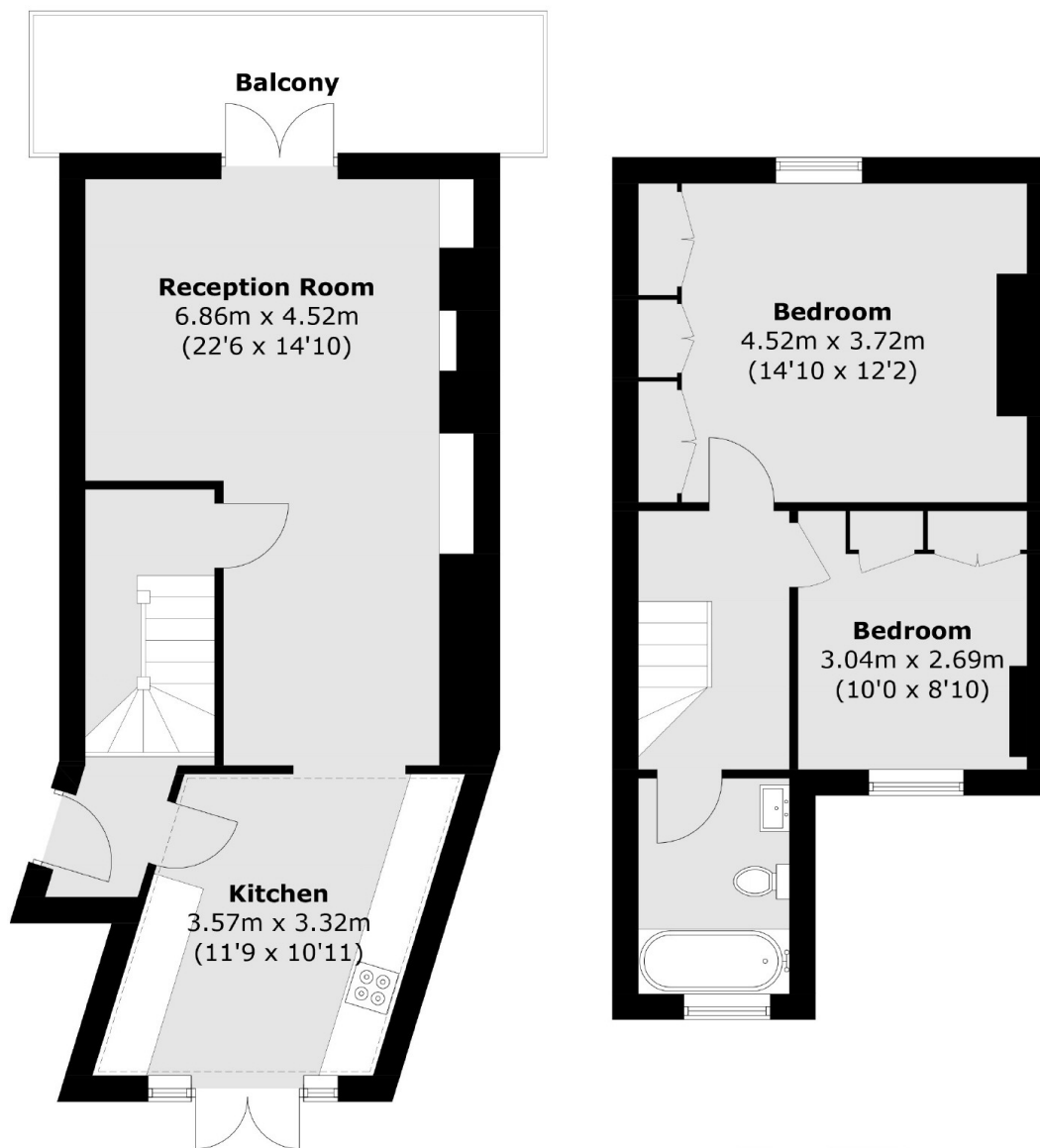
A beautifully finished, modern two bedroom duplex apartment located on the first and second floors of this building in South Kensington. Entering on the first floor, you are welcomed by a large dual aspect semi open plan kitchen reception area, with direct access to both terraces. Leading to the second floor, the half landing gives access to the main bathroom. The second floor comprises both the double bedrooms with ample of built in storage.

Located just moments from all of the amenities of Old Brompton Road, making it an ideal and convenient location. South Kensington underground is the closest tube, with the A4 making it convenient for car access in and out of London.

Features

Two Double Bedrooms
South Facing Reception
Duplex Apartment
Newly Refurbished
Roof Terrace
South Kensington Station

Old Brompton Road, London, SW7



Total area (approx.): 80.8 sq. m (868.8 sq. ft)
Balcony (approx.): 9.4 sq. m 101.1 sq. ft)