



Longridge Road, SW5

£825,000

A spacious first floor, one bedroom flat consisting of a double bedroom, a modern bathroom, separate kitchen and reception room with a private balcony. The property benefits from having high ceilings and is flooded with natural light.

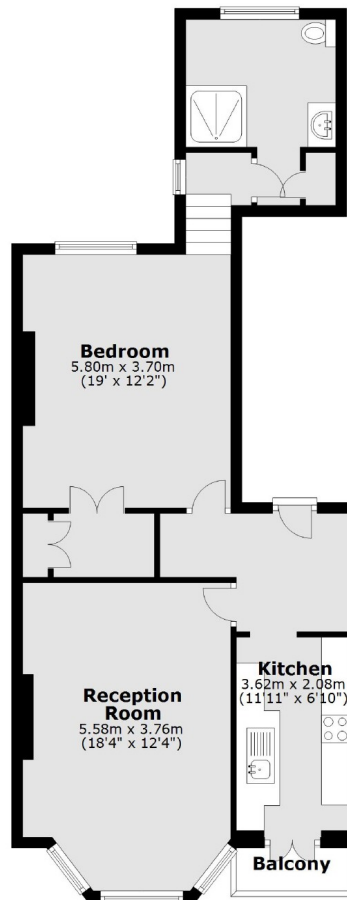
Longridge Road runs off Earls Court Road where there is an abundance of boutique shops, restaurants, bars and local amenities on offer. The property is located close to Earls Court Station and the A4.

Features

- First Floor Flat
- One Double Bedroom
- High Ceilings
- Private Balcony
- Earls Court Station
- Over 700 SqFt

Longridge Road, London, SW5

First Floor



Main area: Approx. 64.9 sq. metres (698.7 sq. feet)
Plus balconies, approx. 1.8 sq. metres (19.3 sq. feet)