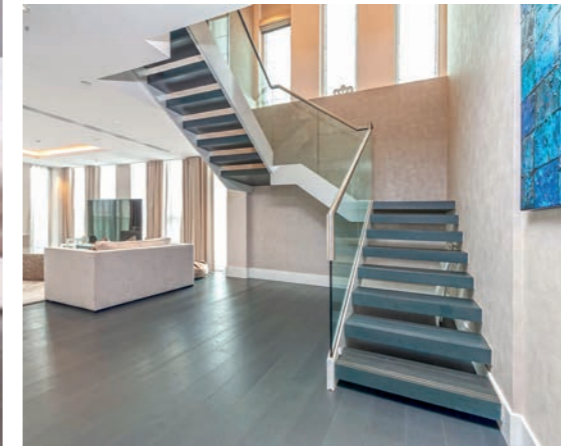


RADNOR TERRACE
KENSINGTON



A luxury four bedroom split level apartment situated on the ninth and tenth floors. This property is located within a highly sought after development.

Oozing with lots of natural light and space, this home has approximately 2,700 sq. ft of accommodation with a large open plan living room with high end appliances and finishes.

There are four double bedrooms, three of which have en suite bathrooms and the principal bedroom comes with a walk-in wardrobe.

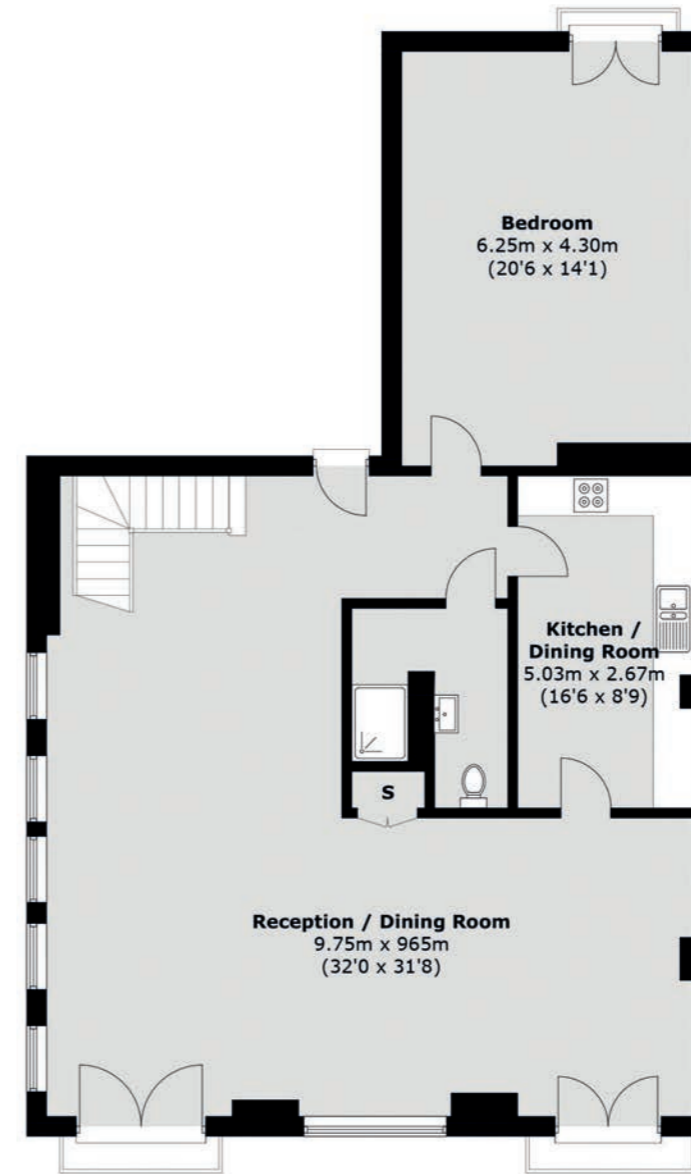
The property offers two allocated, underground parking spaces. There is also the added luxury of access to a superb swimming pool, gym facilities, cinema room and 24-hour concierge service.

Edward House is located in Kensington and within walking distance to the shops, restaurants and the popular Holland Park. Kensington Olympia is also close by and there is easy access to the A4.

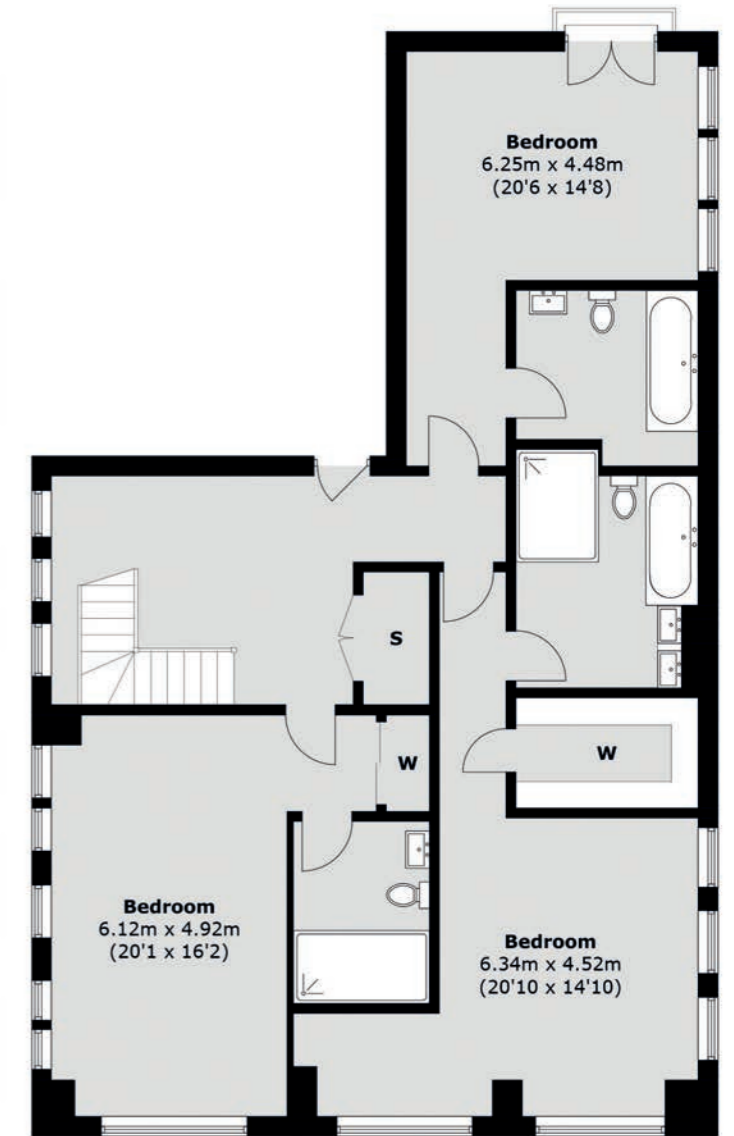


- Four Bedrooms
- Luxury Fittings
- Split Level
- Concierge
- Underground Parking
- Prime Location

Radnor Terrace, Kensington
London, W14



Ninth Floor

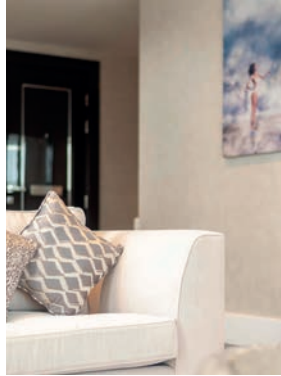


Tenth Floor

Dexters West Kensington
181 North End Road,
London, W14 9NL
Sales: 020 7381 6381
Lettings: 020 7381 4133

TOTAL APPROX. FLOOR AREA 2,648.6 SQ. FT (246.1 SQ. M)
EXTERNAL AREA 36.5 SQ. FT (3.4 SQ. M)

Energy Rating: B. We aim to make our particulars both accurate and reliable. However they are not guaranteed; nor do they form part of an offer or contract. If you require clarification on any points then please contact us, especially if you're traveling some distance to view. Please note that appliances and heating systems have not been tested and therefore no warranties can be given as to their good working order.



Price on application



West Kensington
Sales: 020 7381 6381
Lettings: 020 7381 4133

[dexters.co.uk](https://www.dexters.co.uk)