



Onslow Square, SW7

£2,225 Per week

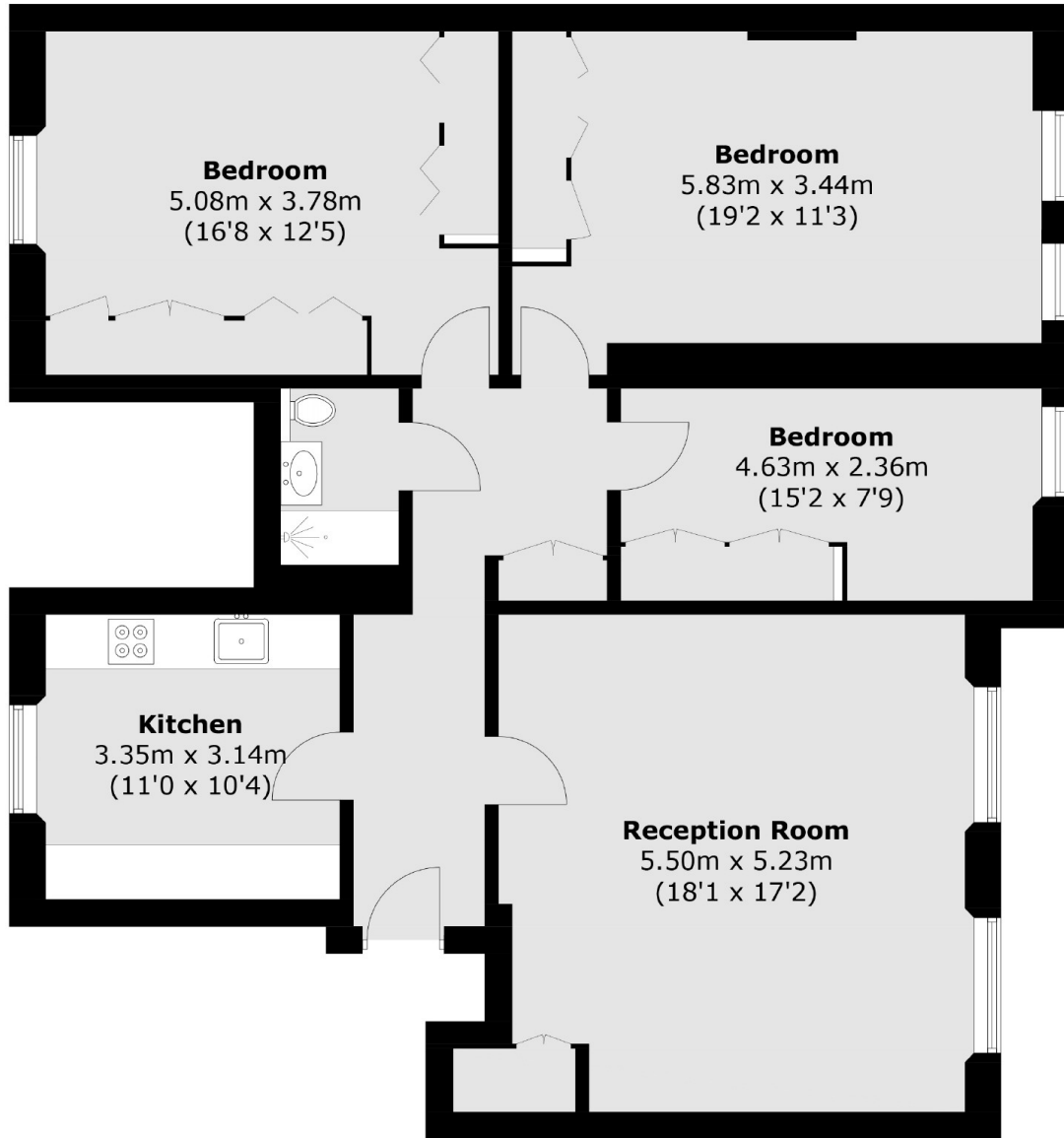
This beautifully interior designed three bedroom property set out on the top floor with lift access, has gone through an extensive refurbishment prior to reaching the market.

Onslow Square is one of South Kensington's garden squares and offers a fantastic location when one is looking for an array of excellent shops and eateries close by. The nearest underground station is South Kensington (Piccadilly, District and Circle lines).

Features

- Newly Refurbished
- Three Bedrooms
- Two Bathrooms
- Interior Designed
- Wooden Floors
- Lift Access

Onslow Square,
London, SW7



Total area (approx.): 110.0 sq. m (1184.0 sq. ft)