



Cromwell Road, SW7

£565,000

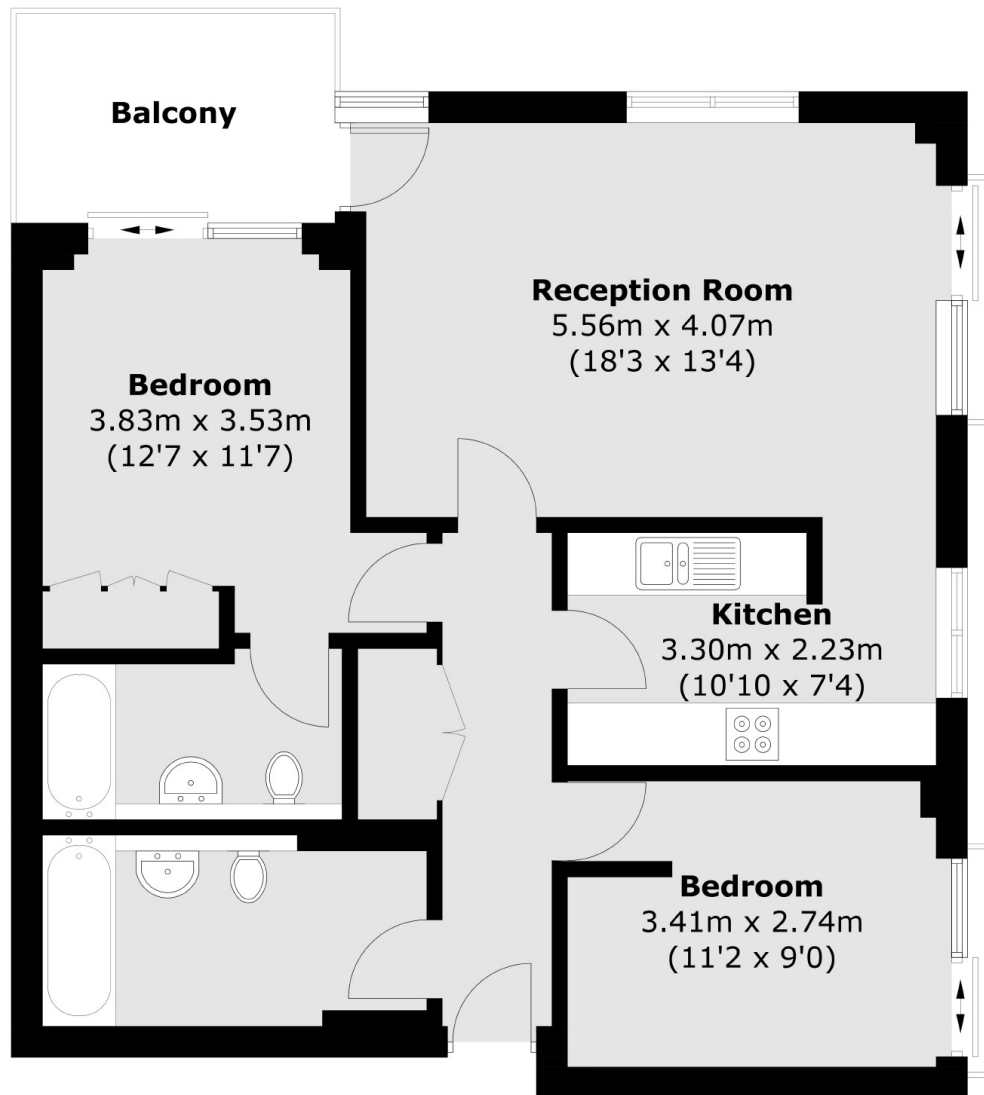
A spacious two double bedroom, two bathroom apartment situated on the seventh floors (with lifts and 24 hour porters). This Point West apartment comprises of an semi open plan kitchen and spacious living room with patio doors leading out onto a private balcony. The property further benefits from London views and private parking.

The apartment is conveniently positioned across the road from Gloucester Road underground station, close to Sainsbury's and Waitrose supermarkets and within easy reach of Kensington High Street and Hyde Park.

Features

- Two Double Bedrooms
- Two Bathrooms
- Allocated Parking: 11 Level B2
- Built In Storage
- Private Terrace
- 24 Hour Concierge

Cromwell Road,
London, SW7



Total area (approx.): 72.6 sq. m (781.4 sq. ft)
Balcony: 6.1 sq. m (65.6 sq. ft)

Dexters

South Kensington
144 Old Brompton Road
London
SW7 4NR
Sales
0207 838 0108

Energy Rating: C. We aim to make our particulars both accurate and reliable. However they are not guaranteed; nor do they form part of an offer or contract. If you require clarification on any points then please contact us, especially if you're traveling some distance to view. Please note that appliances and heating systems have not been tested and therefore no warranties can be given as to their good working order.

 **RICS** | Regulated
Estate Agent
and Letting Agent

[dexters.co.uk](https://www.dexters.co.uk)