



## Cromwell Road, SW7

£625,000

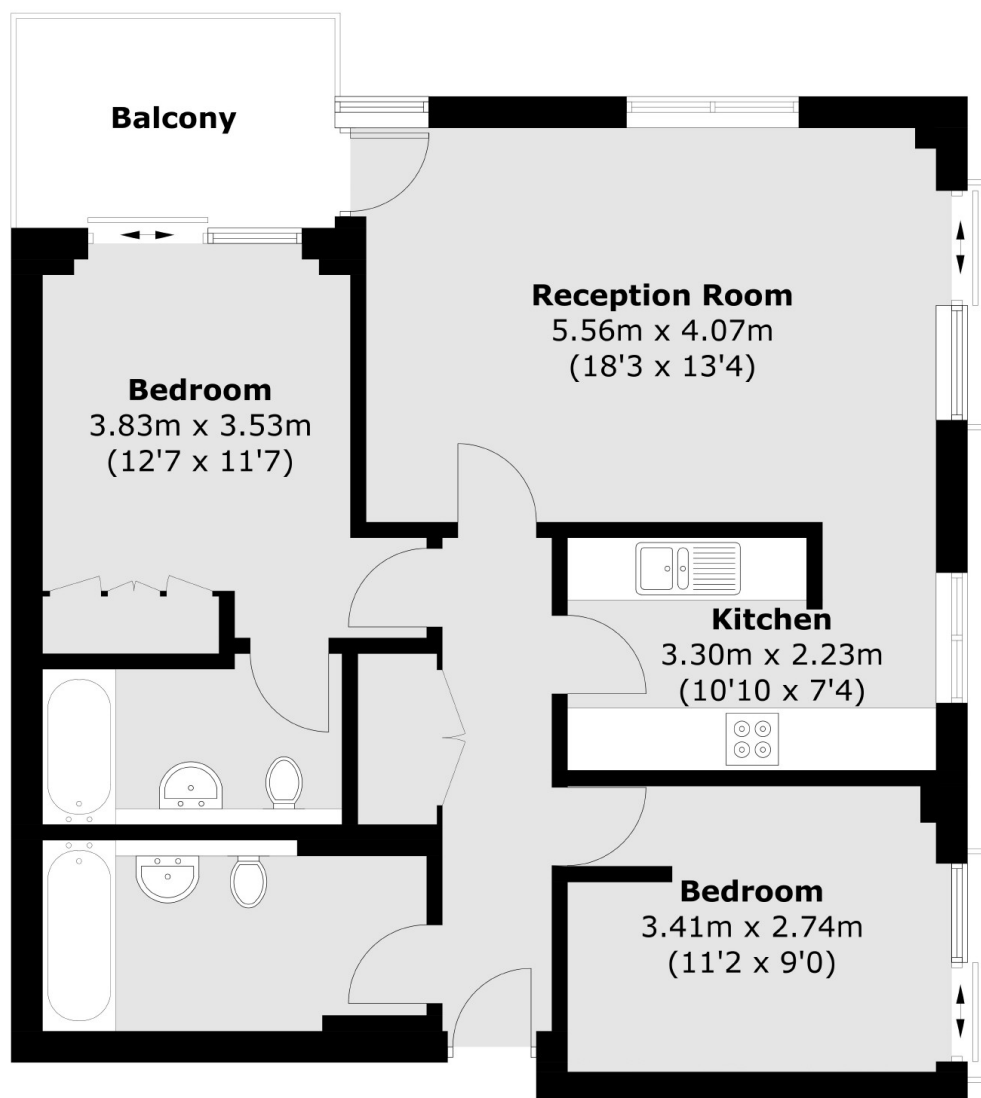
A spacious two double bedroom, two bathroom apartment situated on the seventh floors (with lifts and 24 hour porters). This Point West apartment comprises of an semi open plan kitchen and spacious living room with patio doors leading out onto a private balcony. The property further benefits from London views and private parking.

The apartment is conveniently positioned across the road from Gloucester Road underground station, close to Sainsbury's and Waitrose supermarkets and within easy reach of Kensington High Street and Hyde Park.

### Features

- Two Double Bedrooms
- Two Bathrooms
- Allocated Parking
- Built In Storage
- Private Terrace
- 24 Hour Concierge
- Service Charge: £8,824 p.a
- Ground Rent £1000 p.a
- Lease 102 years

# Cromwell Road, London, SW7



Total area (approx.): 72.6 sq. m (781.4 sq. ft)  
Balcony: 6.1 sq. m (65.6 sq. ft)