



## Onslow Gardens, SW7

£1,425,000

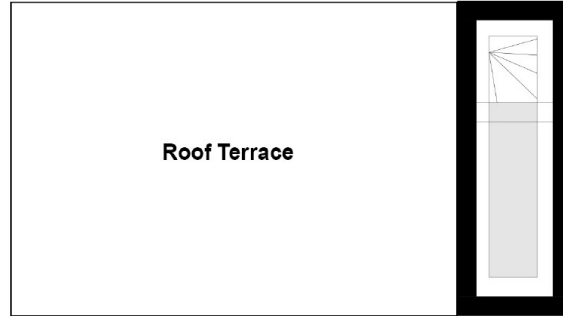
A spacious apartment with a large reception room, modern kitchen and two double bedrooms. This Penthouse is set in a well maintained period building. The property is in excellent condition throughout with plenty of additional storage space. The apartment further benefits from abundant natural light through the skylights on the roof. There is access to a large private roof terrace and communal gardens.

Located in the heart of South Kensington, just off Old Brompton Road, minutes away from the Natural History, the Victoria and Albert museum and close to the Royal Albert Hall. Onslow Gardens is a desirable address and under half a mile from world class shops and restaurants in Knightsbridge. South Kensington provides links to the city via the Piccadilly and District line.

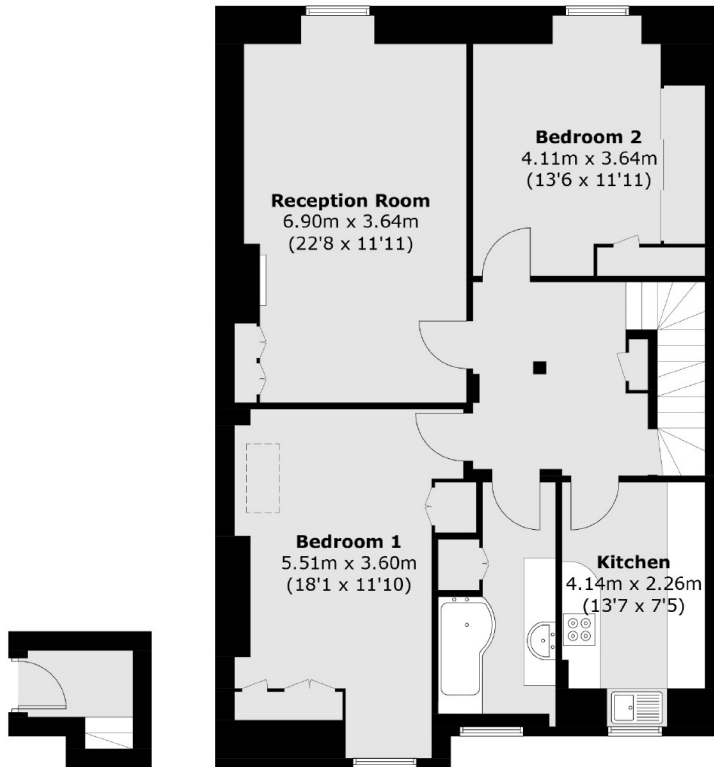
### Features

- Two Double Bedrooms
- Share of Freehold
- Private Roof Terrace
- Communal Gardens
- Ample of Storage
- South Kensington Station

# Onslow Gardens, London, SW7



**Second Floor**



**Ground Floor**

**First Floor**

Total area (approx.): 86.9 sq. m (935.3 sq. ft)  
Loft areas (approx.): 31.0 sq. m (333.6 sq. ft)