



## Bolton Gardens, SW5

£1,600,000

An immaculate second floor two bedroom flat. The property has been renovated to an incredible standard and covers a large lateral space with the reception room and the rear and bedrooms at the front of the building.

Bolton Gardens is a prime location within close proximity to Gloucester Road, Earls Court and South Kensington Station as well as all the shops, restaurants and local amenities on offer. Kensington Gardens are also within reach.

### Features

- Share Of The Freehold
- Two Bedrooms
- Two Bathrooms
- Immaculate Condition
- Ample Storage
- Offered Chain Free



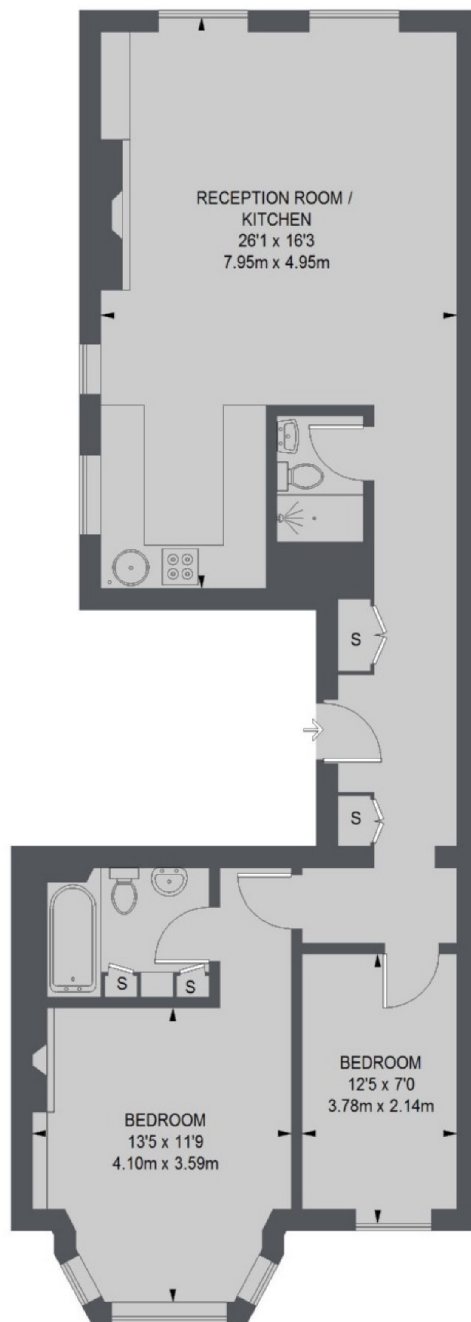
## Bolton Gardens, SW5

The property consists of a welcoming entrance hallway leading to the large open plan reception room and kitchen with high ceilings and large sash windows flooding the room with natural light. The room features a period fireplace and is large enough for separate reception area, dining space and kitchen.

Off the hallway towards the front consists a family bathroom and two double bedrooms. The principle bedroom benefitting from its own en-suite bathroom. Subject to paying the small annual fee there is access to communal garden square.



# Bolton Gardens, London, SW5



SECOND FLOOR

TOTAL APPROX. FLOOR AREA 827 SQ. FT. (76.84 SQ. M.)