



## Cromwell Road, SW7

### £375,000

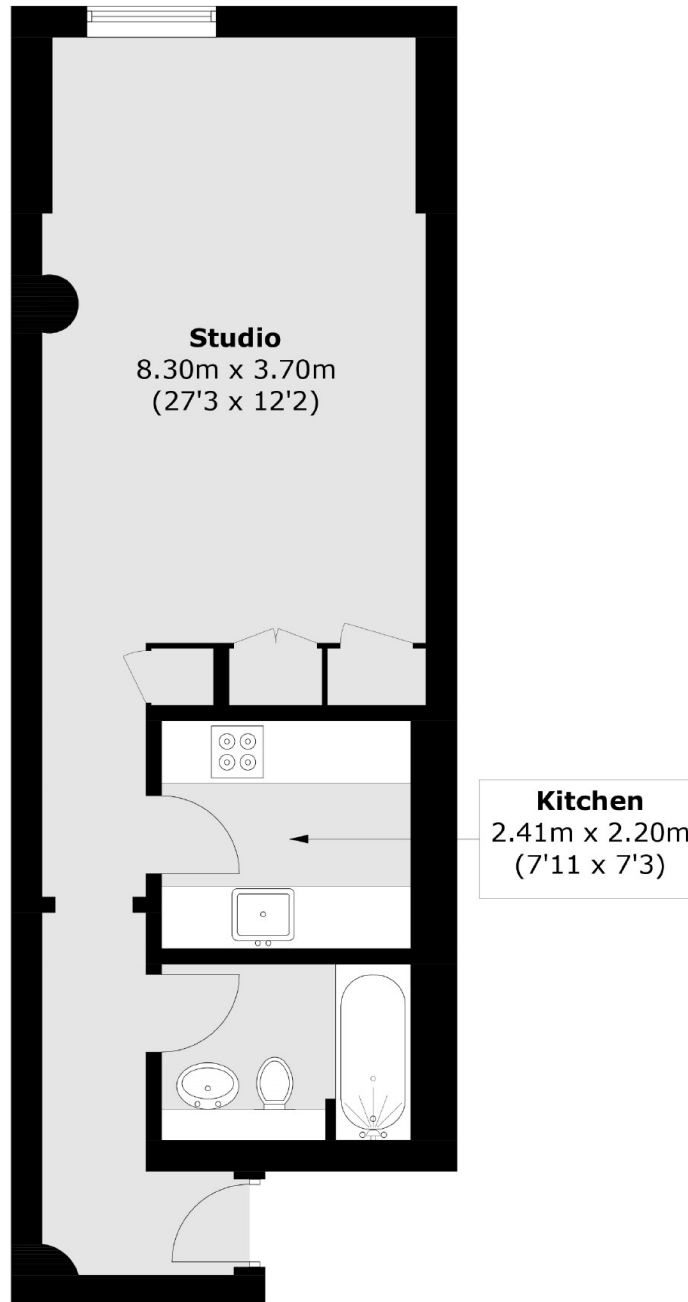
A bright and spacious studio apartment on the eighth floor (with lift) in this popular portered block in South Kensington. The apartment comprises a large studio reception room, separate kitchen and bathroom. Further benefits include fantastic views over London.

The apartment is located in this popular development that benefits from a 24hr concierge and close proximity to the underground station and all the amenities of South Kensington and Gloucester Road.

### Features

- Studio
- Portered Building
- Separate Kitchen
- 24 hour Porter
- Contemporary Finish
- Eighth Floor (Lift Access)

# Cromwell Road, London, SW7



Total area (approx.): 41.0 sq. m (441.3 sq. ft)