



## Nevern Place, SW5

£1,300,000

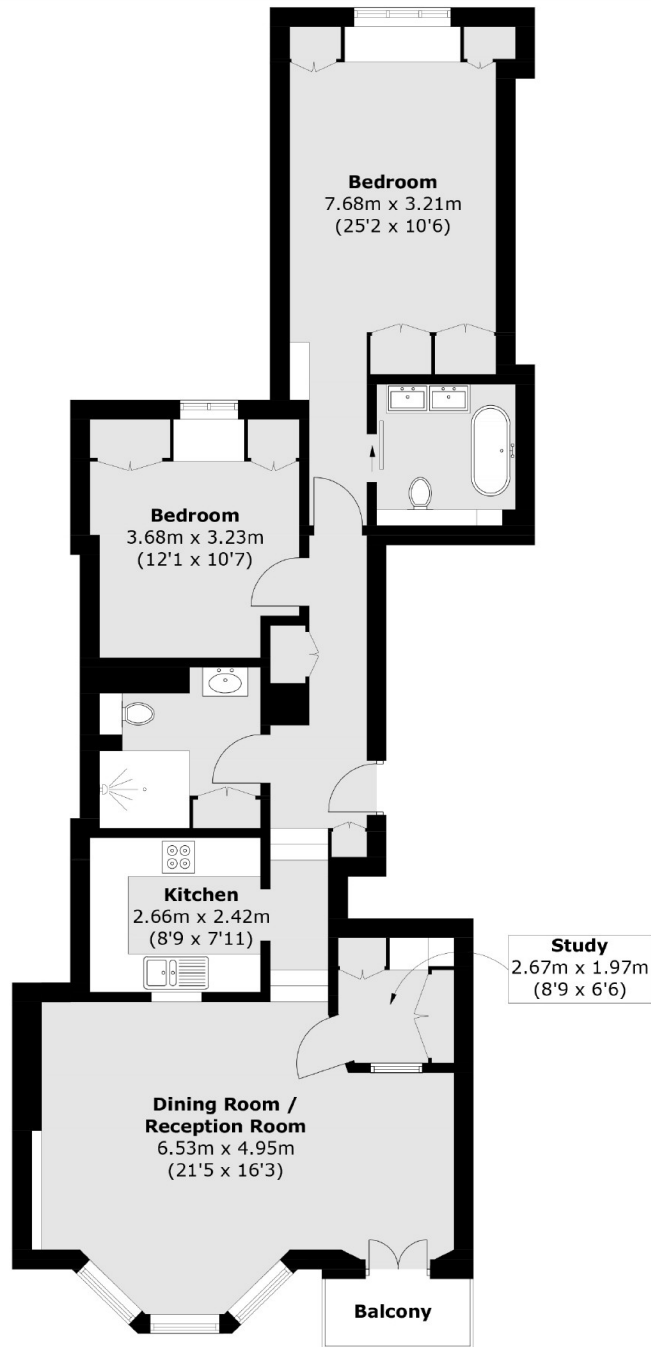
This three bedroom, spacious apartment is arranged over two floors and recently refurbished to an incredibly high standard. Situated in a highly sought after location this property benefits from generous living space, a study room and private balcony.

Nevern Place is an excellent location being just round the corner from the amenities of Earls Court Road which includes many restaurants and bars as well as tube services.

### Features

Highly Sought After Location  
Three Bedrooms  
Lift  
Walking Distance to Amenities  
Balcony  
Share of Freehold

# Nevern Place, London, SW5



Total area (approx.): 90.4 sq. m (973.1 sq. ft)  
Balcony area : 2.4 sq. m (25.8 sq. ft)