



Spear Mews, SW5

£2,850,000

A meticulously finished five bedroom mews house arranged over three floors with a large open plan kitchen/reception room, three bathrooms and plenty of storage throughout.

Spear Mews is conveniently located off Earls Court Road. Allowing for it's own little slice of heaven whilst remaining extremely close to the hustle and bustle of Earls Court.

Features

- Five Double Bedrooms
- Three Bathrooms
- Plenty Of Storage
- Mews House
- Solid Oak Flooring
- New Build



Spear Mews, SW5

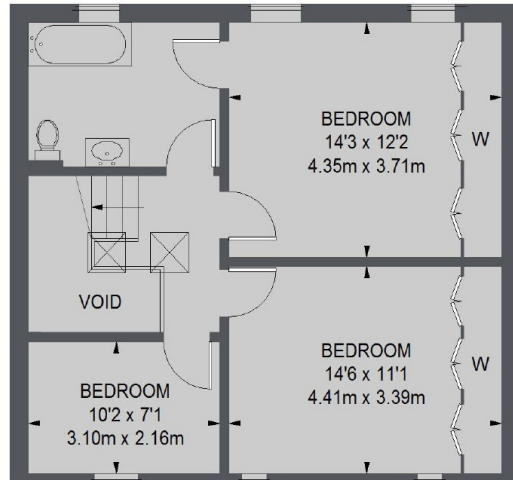
A five bedroom newly built house on a quiet and desirable mews street. The house is laid out over three floors, with a large open plan kitchen reception on the ground floor and the bedrooms on the first and second floor.

There are three fully tiled modern bathrooms with the rest of the property fitted with hardwood flooring. The kitchen has a granite work surface with a separate large fridge and a freezer, while benefiting from plenty of storage.

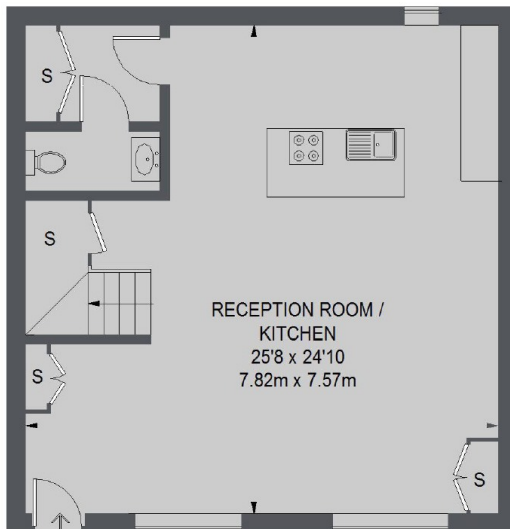
This road is situated in one of the in demand places to live, being surrounded by beautiful Victorian buildings, yet for commuters, both entrances to the tube station are close by, as are the shops, bars, cafes and restaurants in the area.



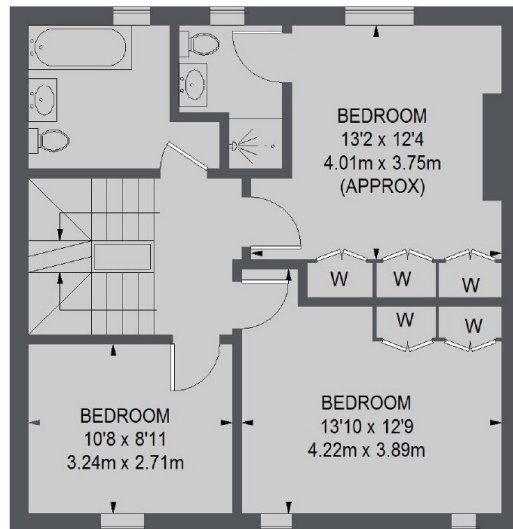
Spear Mews, London, SW5



SECOND FLOOR



GROUND FLOOR



FIRST FLOOR

TOTAL APPROX. FLOOR AREA
(EXCLUDING VOID)
1827 SQ. FT. (169.71 SQ. M.)