

Ennismore Gardens, SW7

£1,269 Per week

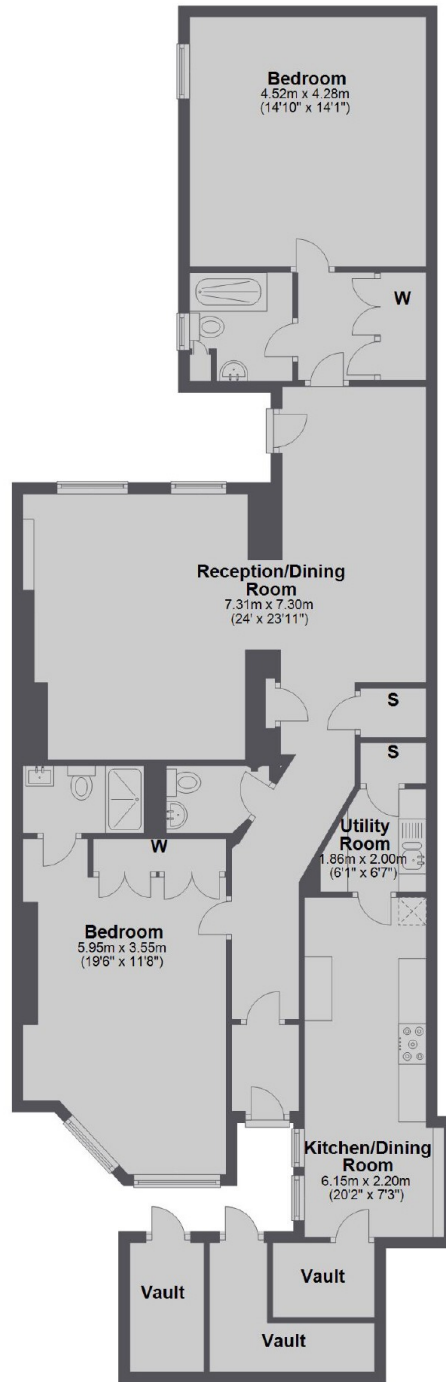
Beautifully finished two double bed roomed apartment with fantastic living/dining space and a wonderful private patio.

Ennismore Gardens is one of the most sought after garden squares in Knightsbridge and is near to Harrods, Hyde Park and the world class restaurants and boutiques of the area. The closest means of transport is South Kensington underground station.

Features

- Two Double Bedrooms
- Two En Suite Bathrooms
- Private Patio
- Separate Modern Kitchen
- Private Entrance
- Excellent Storage

Ennismore Gardens, London, SW7



Lower Ground Floor

Total area: approx. 133.5 sq. metres (1436.8 sq. feet)