



Drayton Gardens, SW10

£1,000,000

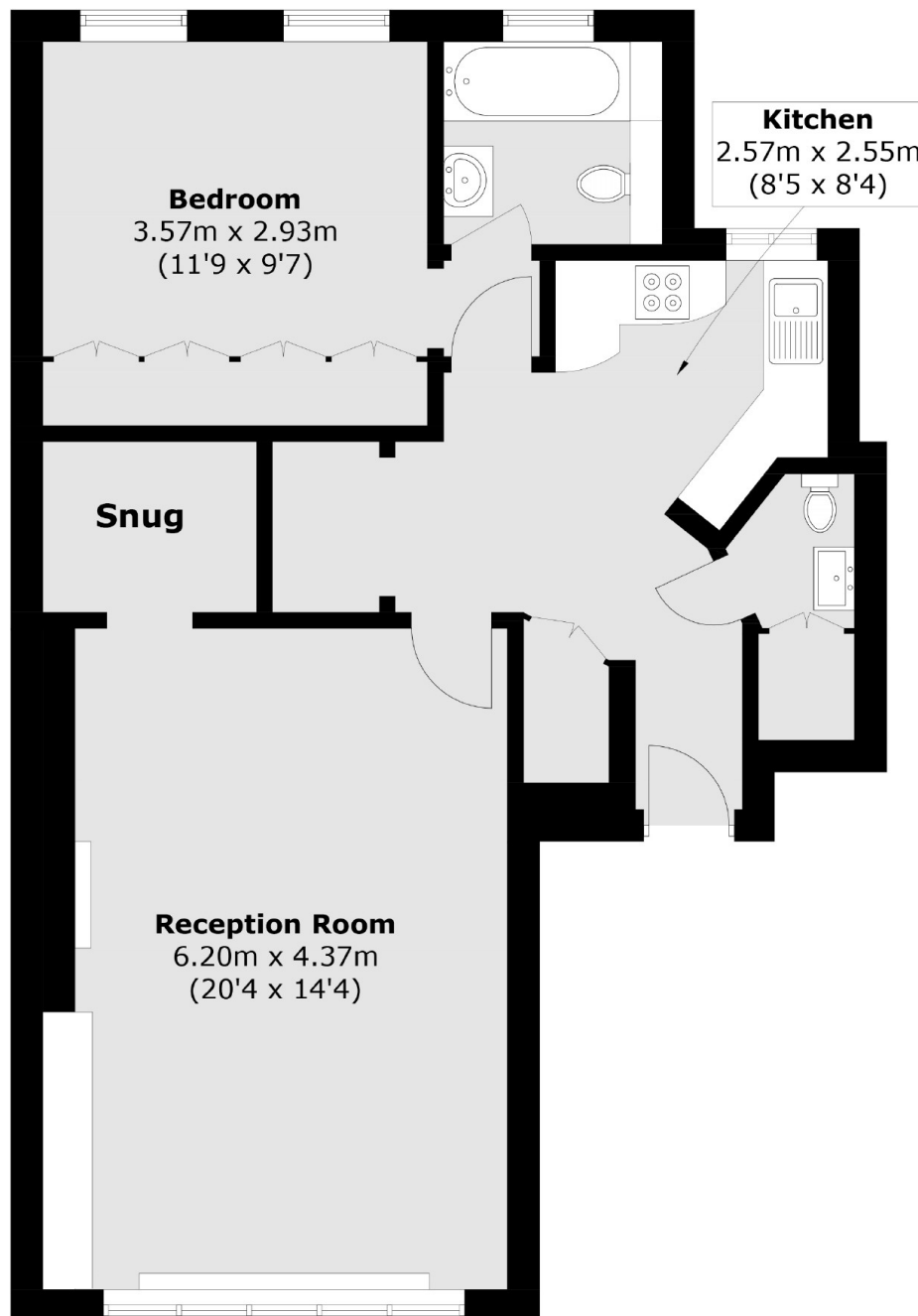
A bright, spacious and quiet one-bedroomed apartment - one of only five in this lovely Victorian residence - overlooking Evelyn Gardens and the pedestrianised Thistle Grove. It has ample wardrobe and cupboard space, and is close to the many amenities of Fulham Road and Kings Road.

Drayton Gardens is a highly-desirable location at the heart of Chelsea and South Kensington. Both South Kensington and Gloucester Road underground stations (District, Circle and Piccadilly lines) are within walking distance.

Features

- Large Reception With Functioning Fireplace
- Share of Freehold
- Communal Garden
- Separate Sleeping Alcove
- Guest Cloakroom
- Walking Distance of Amenities

Drayton Gardens, London, SW10



Total area (approx.): 69.2 sq. m (744.9 sq. ft)