



Stanhope Mews East, SW7

£2,250,000

A stunning three storey mews house offering well-proportioned living accommodation with a bright interior, and a terrace leading off the both the top floor bedrooms.

Stanhope Mews East is well located in the heart of South Kensington. It is a quiet residential street between South Kensington and Gloucester Road tube stations.

Features

- Freehold
- Four Double Bedrooms
- Two Bathrooms
- Open Plan Kitchen/Reception
- Excellent Location
- Gloucester Road Station



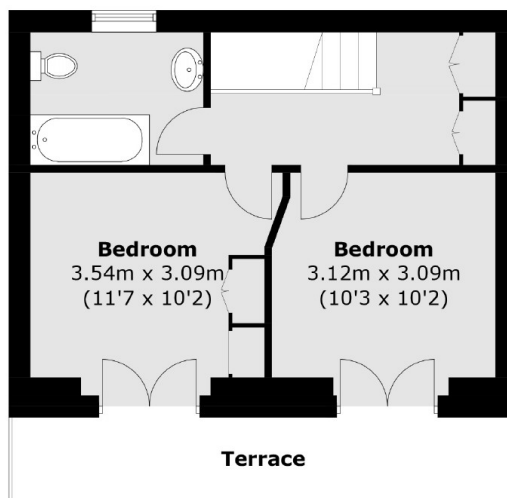
Stanhope Mews East, SW7

Finished to a high standard throughout, upon entering the property you have two double bedrooms, one bathroom and large under stairs storage area. The first floor enters you into the main open plan kitchen reception area which has lots of natural light.

On the top floor comprises the second bathroom and two double bedrooms, both of which have direct access to the terrace area. There is also a large storage area on the landing.



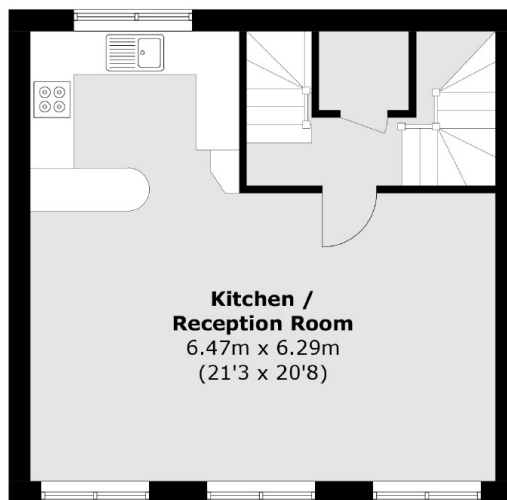
Stanhope Mews East, London, SW7



Second Floor



Ground Floor



First Floor

Total area (approx.): 114.1 sq. m (1,228.1 sq. ft)
Terrace: 8.0 sq. m (86.1 sq. ft)