



## Warwick Gardens, W14

£795,000

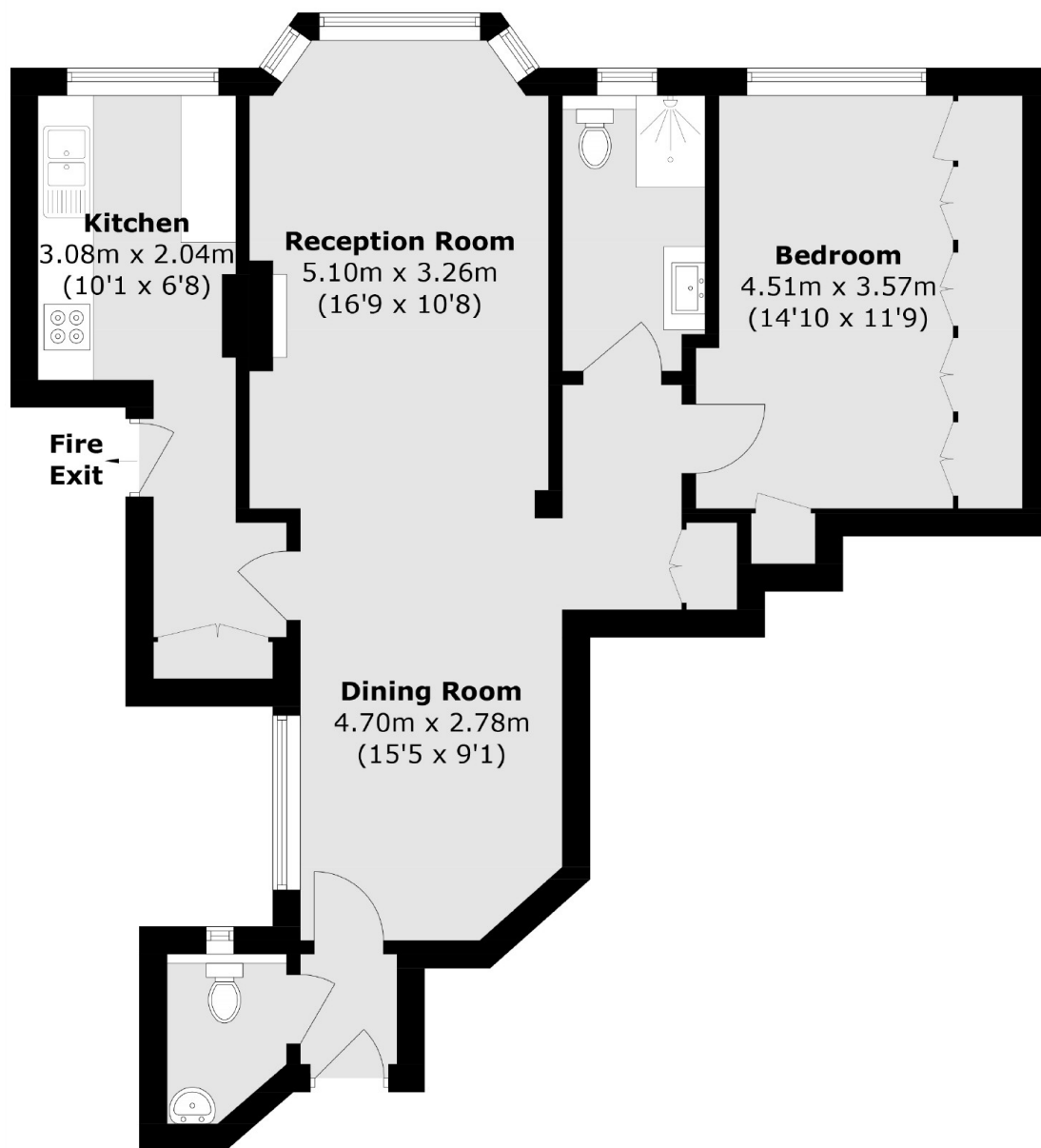
Renovated to a meticulous standard this well proportioned one double bedroom apartment. Entering you have a guest w/c leading onto the large open plan reception dining area with separate newly fitted kitchen. Off this is a good size double bedroom with plenty of built storage, and modernised bathroom. Further benefitting from access to communal gardens.

This prime location is close to the many amenities, shops, restaurants and bars on offer in the sought-after High Street Kensington. The property is also within close proximity to Kensington High Street Station.

### Features

- Large Double Bedroom
- Newly Renovated
- Lift
- Portered Building
- Guest W/C
- Kensington High Street Station

# Warwick Gardens, London, W14



Total area (approx.): 70.4 sq. m (757.8 sq. ft)