



Pembroke Road, W8

£975,000

The property offers three double bedrooms, two bathrooms, a large lounge with separate kitchen and plenty of storage throughout. The flat is located on the second floor (with lift) of this portered development and has access to communal gardens.

Chatsworth Court is located close to all local amenities and transport links of both Earl's Court and High Street Kensington allowing easy access to central London.

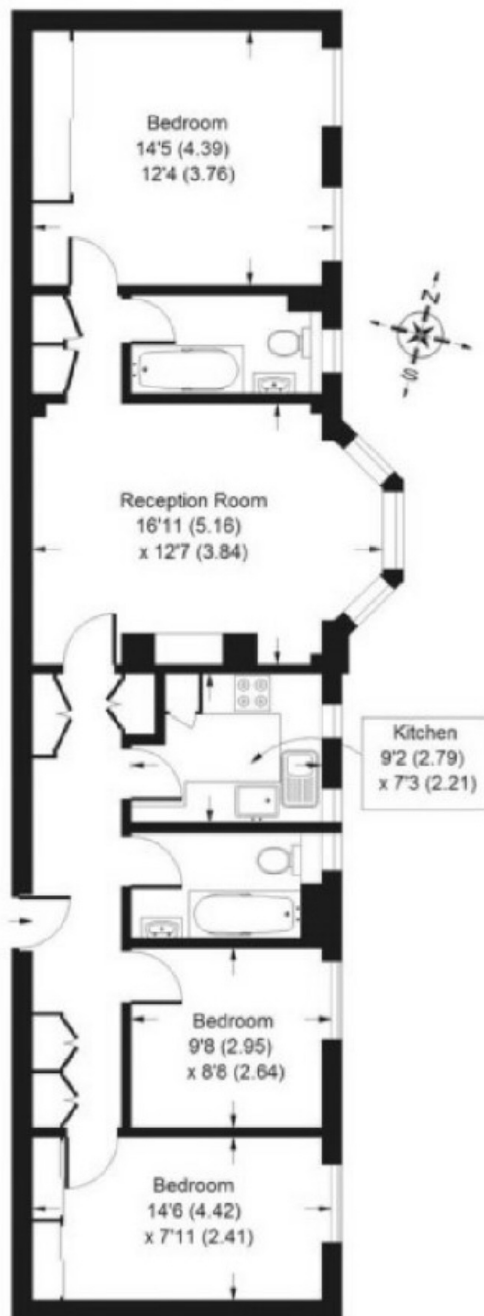
Features

- Three Bedrooms
- Two Bathrooms
- 24 Hour Porter
- Overlooks Garden Square
- Second Floor With Lift
- Wood Flooring

Pembroke Road, London, W8

Chatsworth Court, W8

APPROX. GROSS INTERNAL FLOOR AREA
888 SQFT / 82.5 SQM



SECOND FLOOR