



## Drayton Gardens, SW10

£1,895 Per week

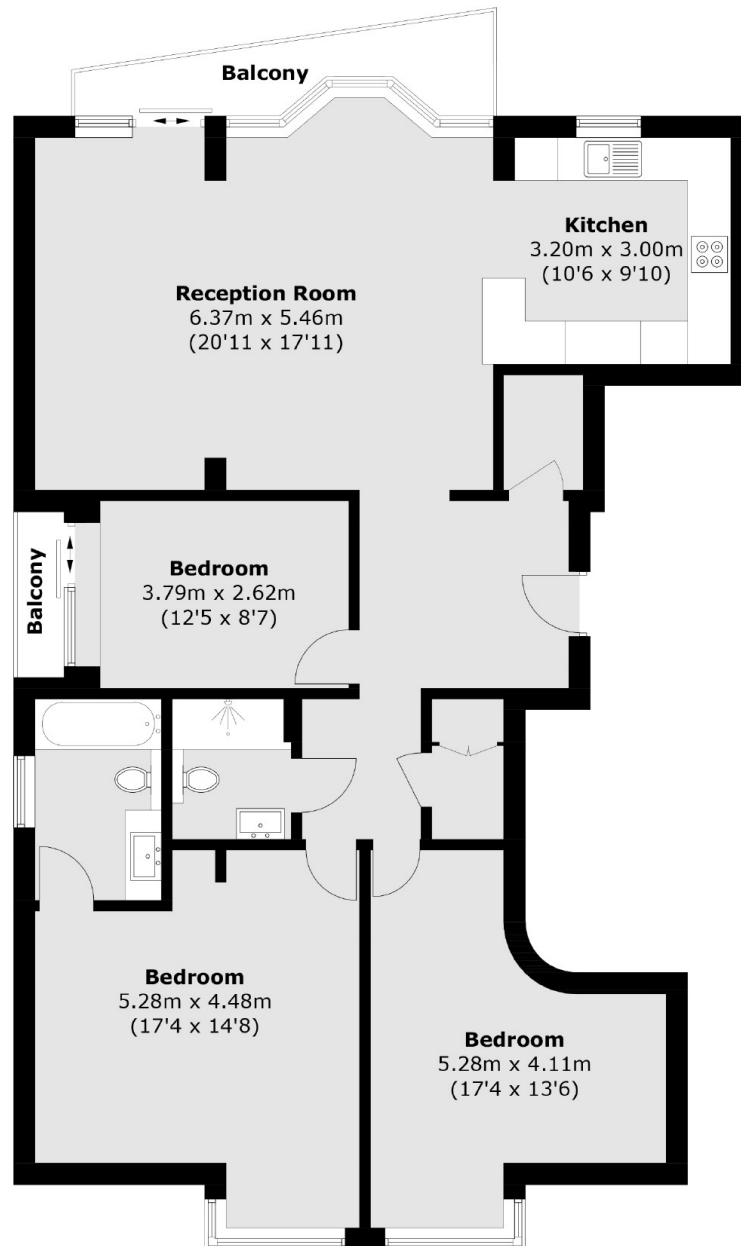
Set within a beautiful block on a very desirable road in Chelsea. This lateral three bedroom property is ideal for any family looking for space. With ample storage and large open plane living area, set on the 2nd floor with lift and private balcony.

Drayton Gardens is a popular location in the Fulham Beach area of Chelsea and moments from the boutiques, shops and cafes of Fulham Road.

### Features

- Three Bedroom
- Large Reception Room
- Utility Room
- Semi Open Plan Kitchen
- Wood Flooring
- Lift
- Porter

# Drayton Gardens, London, SW10



## Second Floor

Total area (approx.): 115.0 sq. m (1,238.0 sq. ft)

Balcony area (approx.): 6.6 sq. m (71.0 sq. ft)