

Ennismore Gardens, SW7

£1,375,000

A beautifully refurbished and elegantly designed one bedroom apartment with its own private terrace perfectly situated on the first floor (with lift) of this portered period building in the heart of Knightsbridge. The flat consists an open plan reception room, kitchen and dining room, a bedroom with generous built in storage, a separate bathroom and an excellent terrace. The apartment would make the ideal pied-a-terre

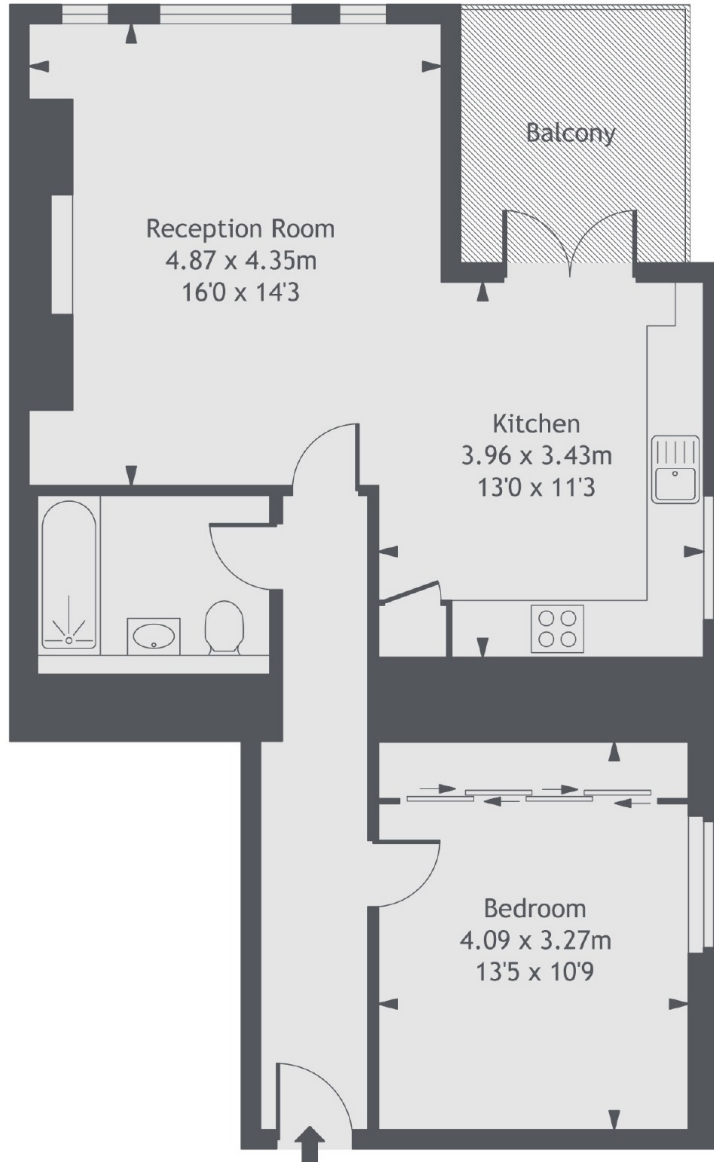
Ennismore Gardens is a tranquil, private, residents only square located in Knightsbridge with easy access to South Kensington and Hyde Park. Imperial College is located on Exhibition Road and Harrods and Harvey Nichols both an easy walk from the property. Nearest underground stations are situated at Knightsbridge and South Kensington.

Features

- Terrace
- Porter
- Lift
- Under Floor Heating
- Communal Gardens
- En-Suite Bathroom

Ennismore Gardens, London, SW7

Fourth Floor



Gross Internal Area 675 sq ft (62.69 sq m)

Balcony Area 68 sq ft (6.32 sq m)