



Ennismore Gardens, SW7

£575,000

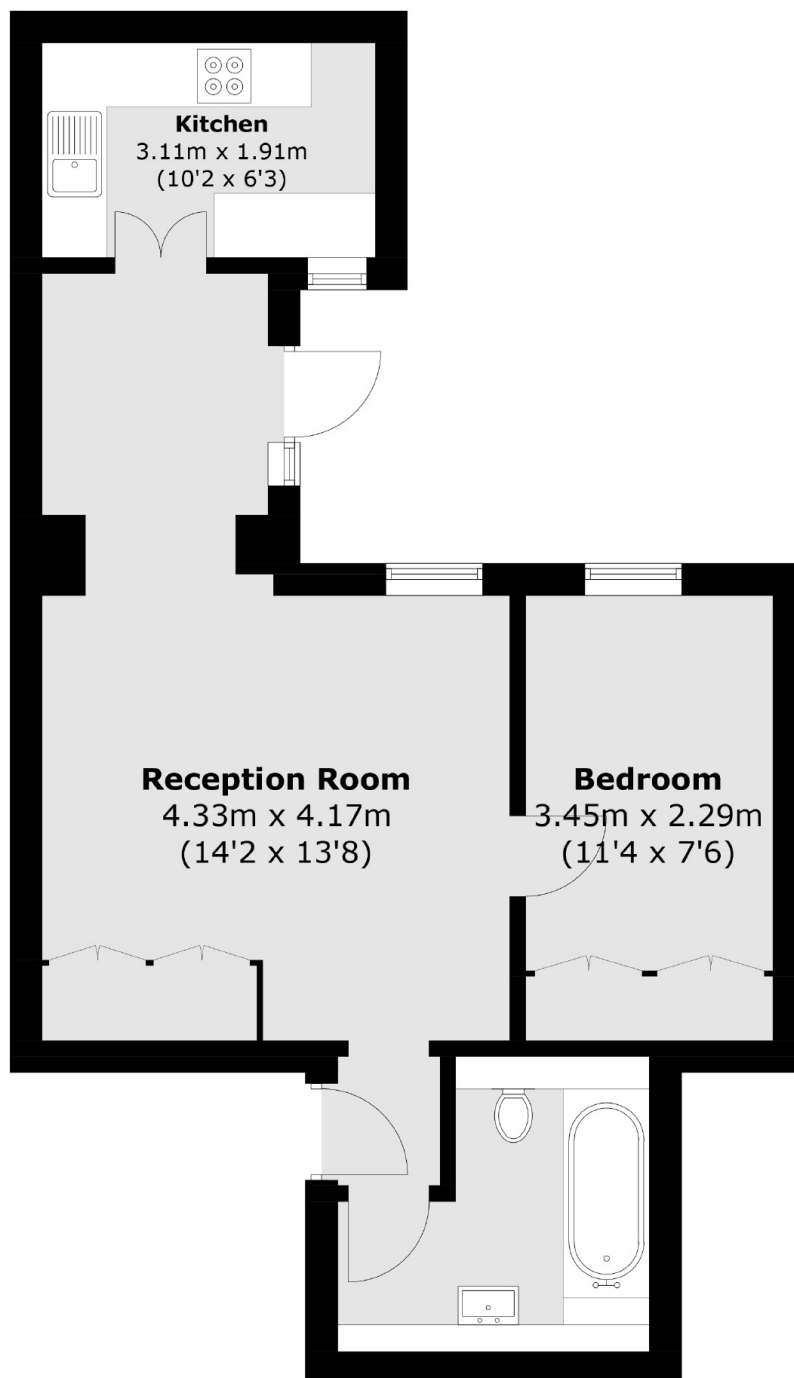
A spacious, one bedroom flat consisting of a double bedroom, bathroom and open plan kitchen/living room, large enough for both reception and dining space. The property has high ceilings and two entrances, its own private and the other through the main entrance of the building. Further benefits are access to the communal gardens.

Ennismore Gardens is a tranquil, private, residents-only square located in Knightsbridge with easy access to South Kensington and Hyde Park. Imperial College is located on Exhibition Road and Harrods on Brompton Road, both an easy walk from the property. Nearest underground stations are situated at Knightsbridge and South Kensington.

Features

- One Double Bedroom
- Communal Gardens
- Long Lease
- Open Plan
- High Ceilings
- Lower Ground Floor

Ennismore Gardens, London, SW7



Total area (approx.): 49.7 sq. m (535.0 sq. ft)