



Nevern Square, SW5

£825,000

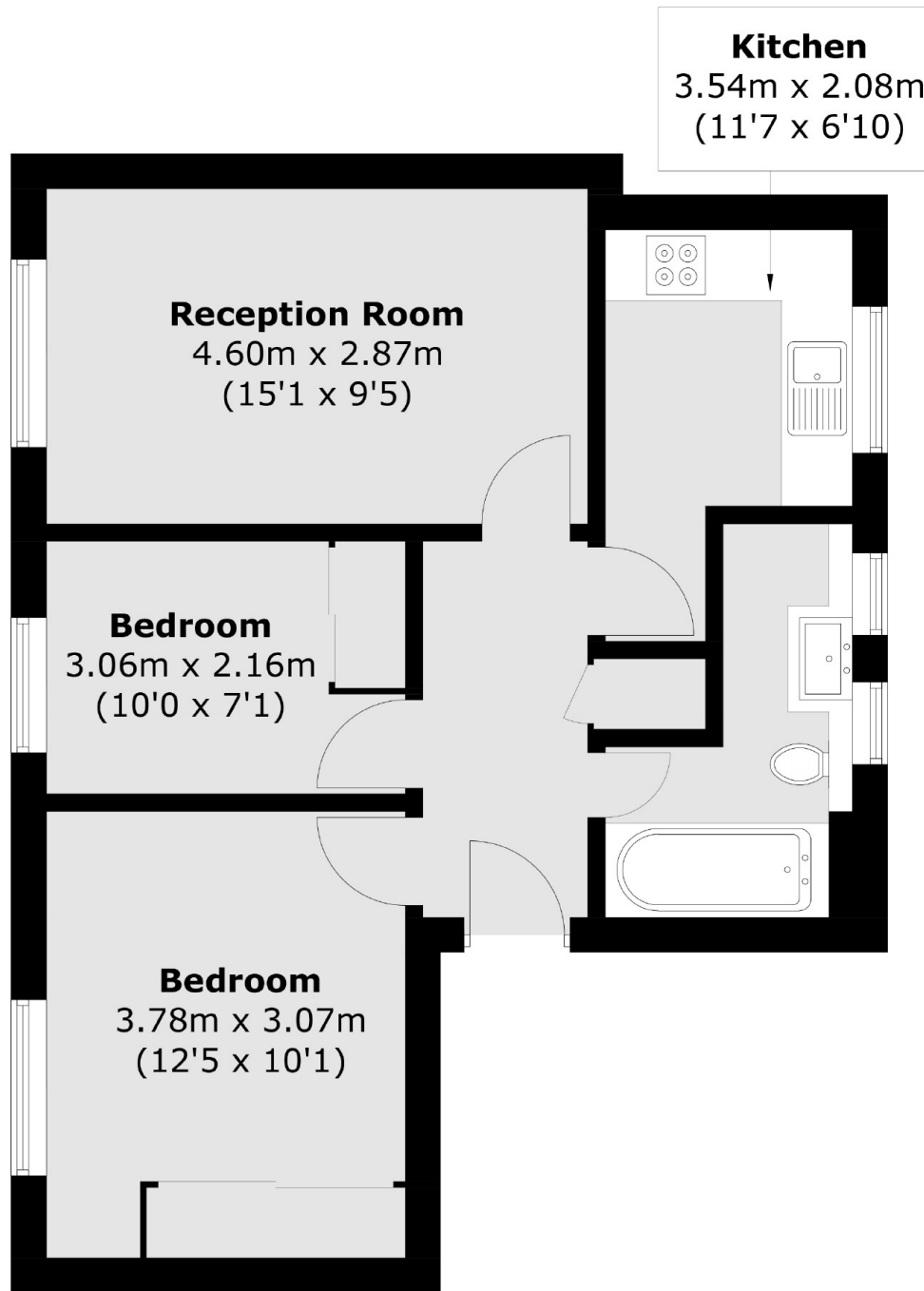
A charming and bright two bedroom apartment in this popular mansion block at the Northern end of the square. The property is situated on the top floor (with lift). The top floor was later added to the building, so benefits from more recent building regulations and insulation. The property currently returns a high yield.

Quietly positioned with excellent access to the amenities of Earls Court Road and High Street Kensington. Earls Court tube for the District and Piccadilly lines and West Brompton overground is also close by.

Features

- Two Double Bedrooms
- Long Lease
- Lift
- Top Floor
- Separate Kitchen
- Earls Court Underground

Nevern Square, London, SW5



Total area (approx.): 50.3 sq. m (541.0 sq. ft)