



## Egerton Gardens, SW3

£1,400,000

A contemporary, interior designed apartment finished to a high standard throughout. With direct access to communal gardens, this lower ground property is situated in a sought after location.

Egerton Gardens is a desirable address and under half a mile to the world-class shops, restaurants and amenities of Knightsbridge and South Kensington. The closest station is South Kensington.

### Features

- Two Bedrooms
- Two Bathrooms
- Excellent Condition
- Private Entrance
- Highly Desirable Location
- South Kensington Station





## Egerton Gardens, SW3

Having the benefit of its own private entrance, this apartment has a good sized reception room, a separate kitchen as well as the use of two storage vaults.

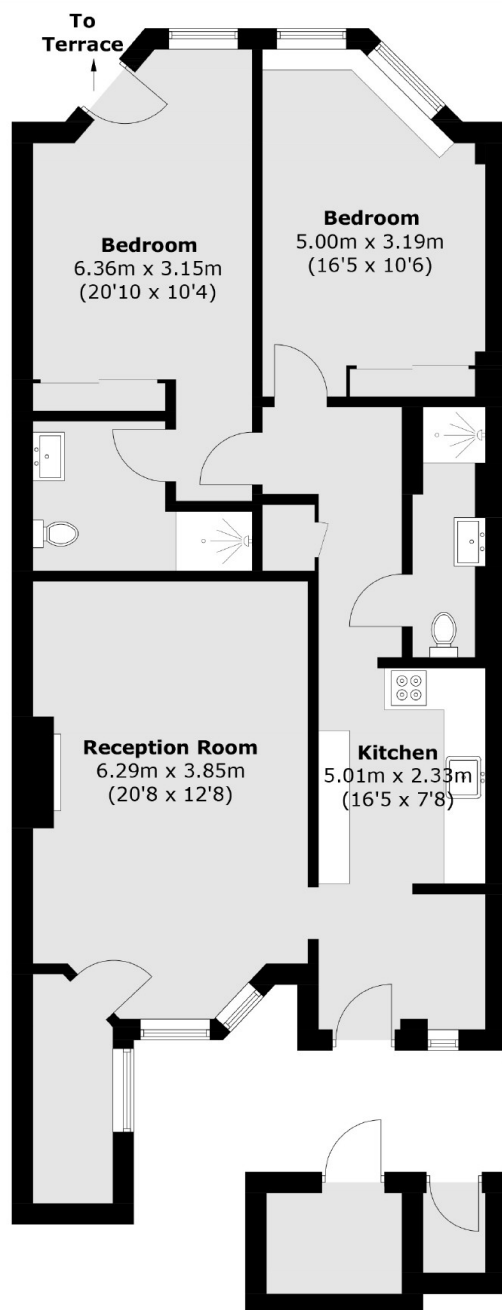
The two double bedrooms are of similar size with two bathrooms, one of which is en suite. There is also direct access to the communal gardens.

Egerton Gardens is a very attractive garden crescent, situated between the popular areas of Knightsbridge and Brompton Cross.





# Egerton Gardens, London, SW3



## Lower Ground Floor

Total area (approx.): 90.3 sq. m (972.0 sq. ft)  
Outbuilding: 4.5 sq. m (48.4 sq. ft)