



## Warwick Road, W14

### £380,000

A spacious top floor flat with a bright westerly facing reception room, large double bedroom and open plan kitchen / diner. The property further benefits from double glazing throughout and has been recently redecorated.

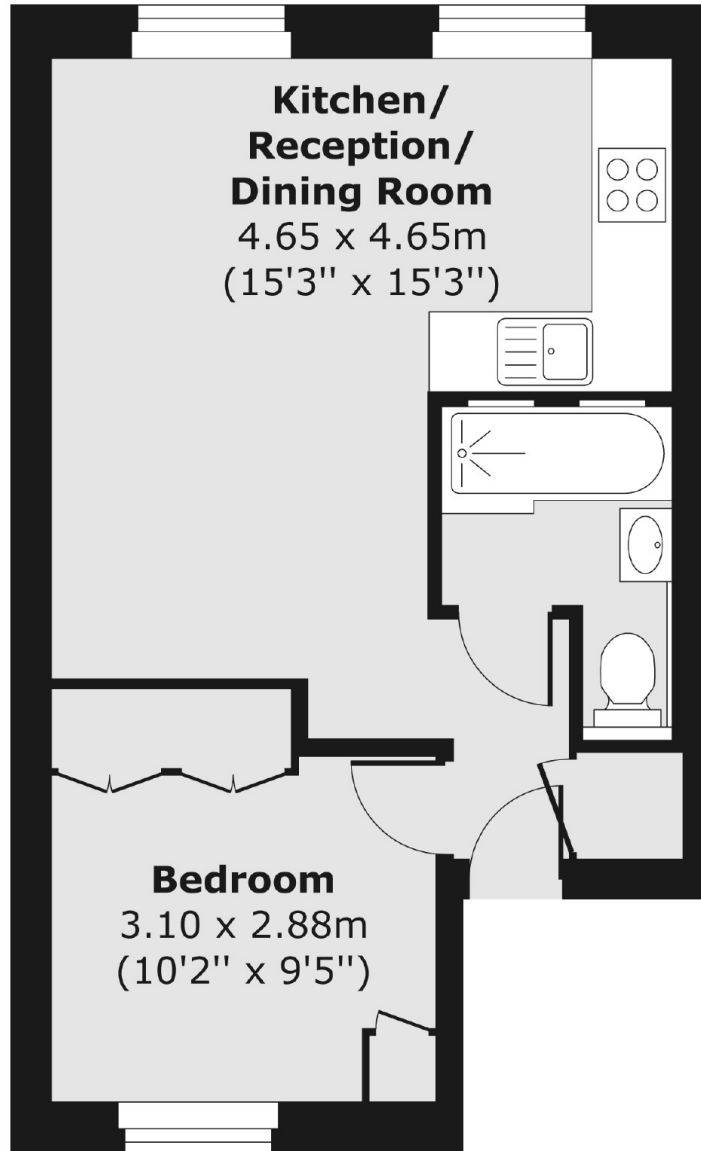
It's situated on Warwick Road, near to the junction of Kensington High Street; within close proximity of train stations: Kensington Olympia, West Kensington, Earls Court and High Street Kensington. Benefiting from having all the local shops, restaurants and bars on offer.

### Features

- One Double Bedroom
- Built In Storage
- Open Plan Living
- Newly Decorated
- Near to Kensington High Street
- No Chain

**Warwick Road,  
London, W14**

## Second Floor



Total area (approx.) 33.21 sq. m (357 sq. ft)

**Dexters**

South Kensington  
144 Old Brompton Road  
London  
SW7 4NR  
Sales  
0207 838 0108

Energy Rating: D. We aim to make our particulars both accurate and reliable. However they are not guaranteed; nor do they form part of an offer or contract. If you require clarification on any points then please contact us, especially if you're traveling some distance to view. Please note that appliances and heating systems have not been tested and therefore no warranties can be given as to their good working order.

 **RICS** | Regulated  
Estate Agent  
and Letting Agent

[dexters.co.uk](http://dexters.co.uk)