



Gaspar Mews, SW5

£2,795 Per week

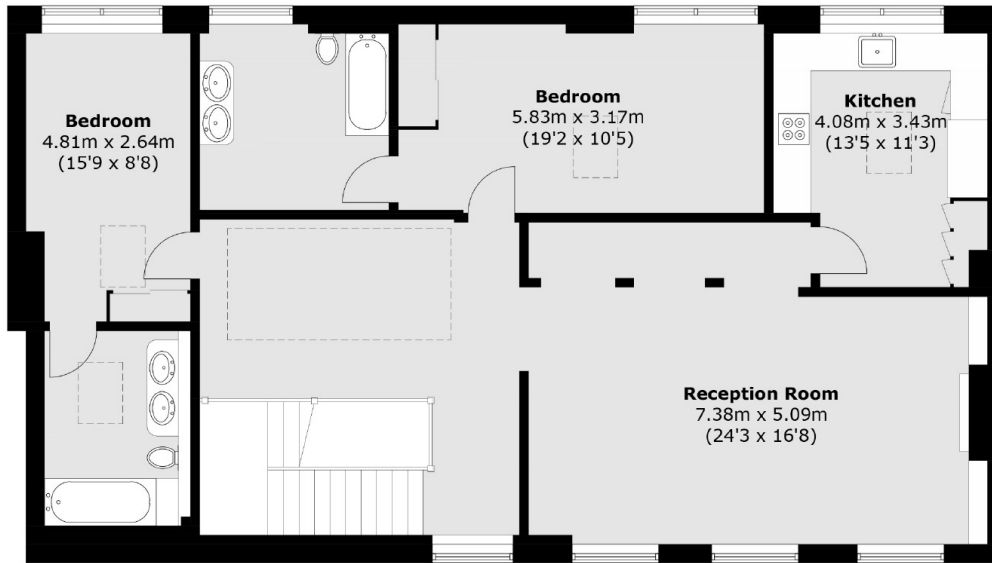
An extremely rare opportunity to rent this newly refurbished three double bedroom, three bathroom mews house, which also benefits from two kitchens and a double garage.

Gaspar Mews is a charming cobbled mews that is on the border of South Kensington and Earls Court.. The closest tube stations are Earl's Court and Gloucester Road.

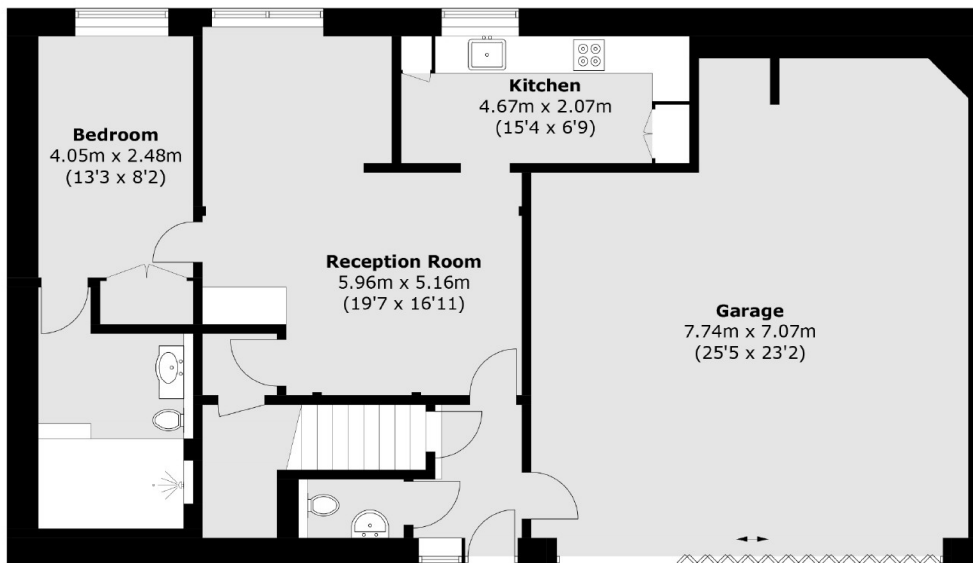
Features

- Three Double Bedrooms
- Three Bathrooms
- Brand New Refurb
- Two Kitchens
- Double Garage
- Mews House

Gaspar Mews, London, SW5



First Floor



Ground Floor

Total area (approx.): 248.9 sq. m (2,679.2 sq. ft)
(Including Garage)